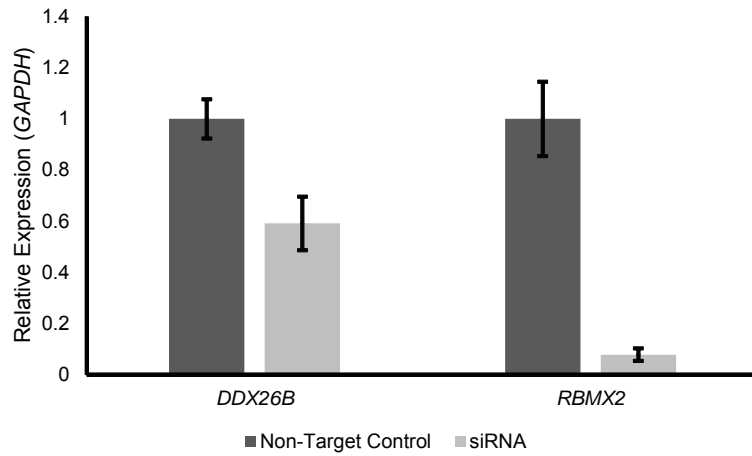
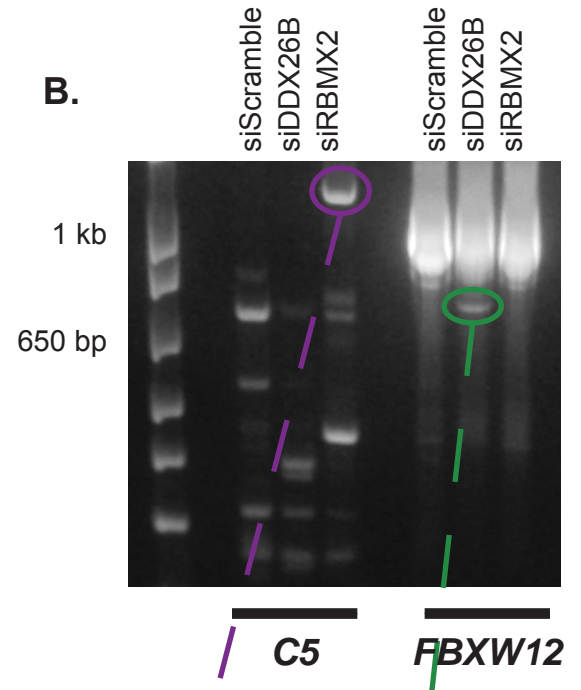


Supplemental Figure S1

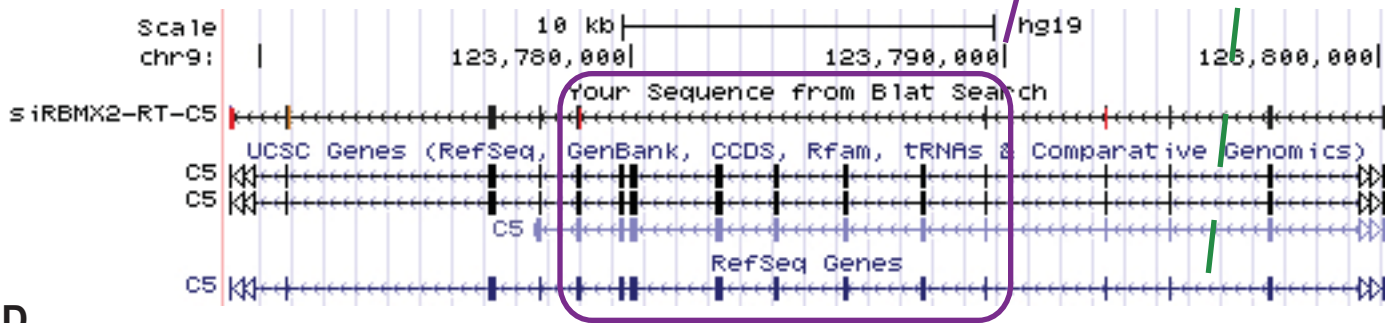
A.



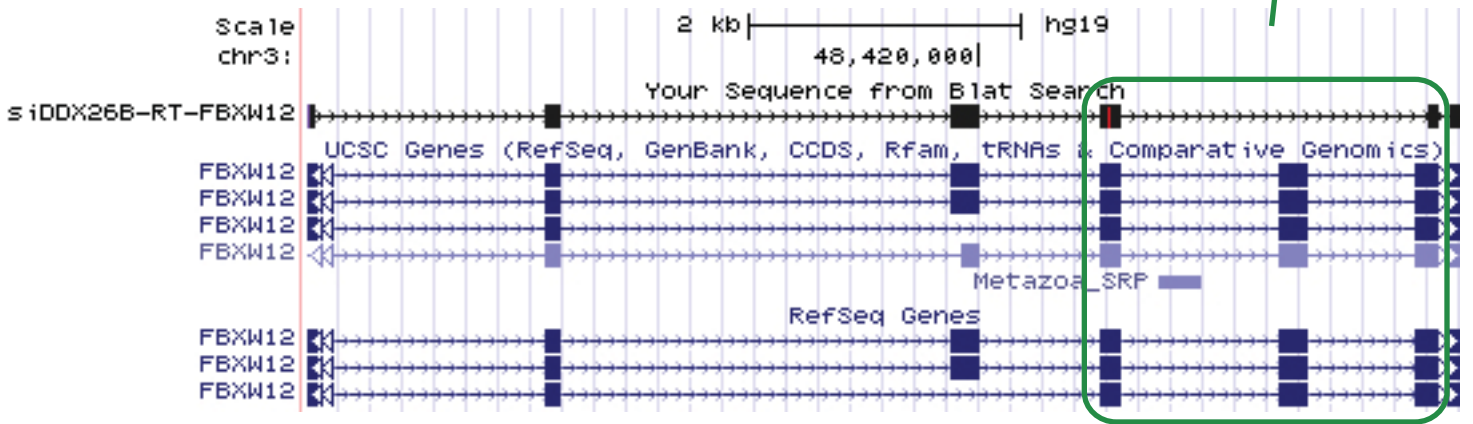
B.



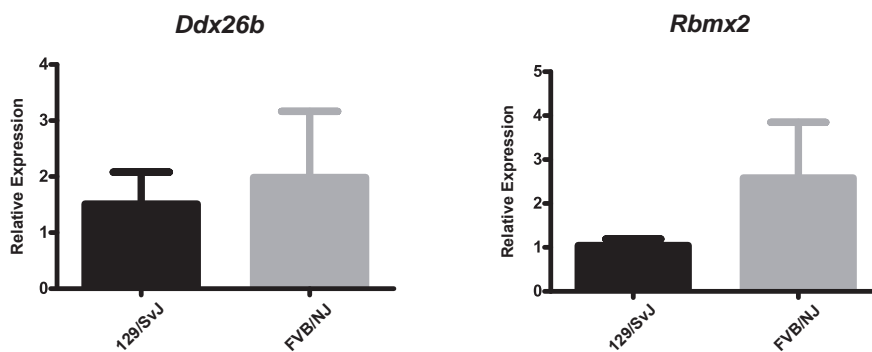
C.



D.

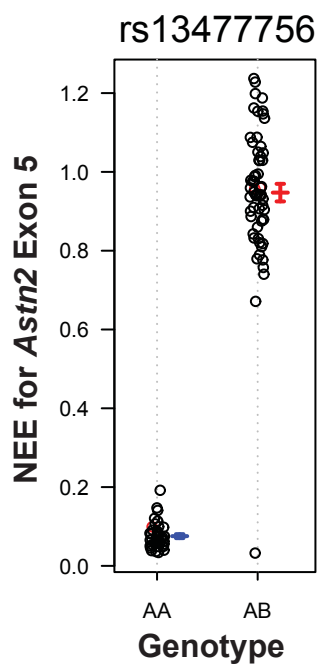


E.

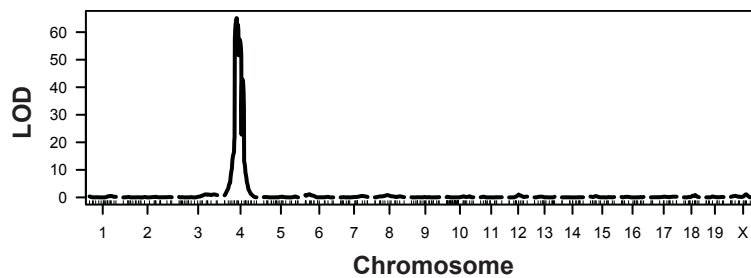


Supplemental Figure S2

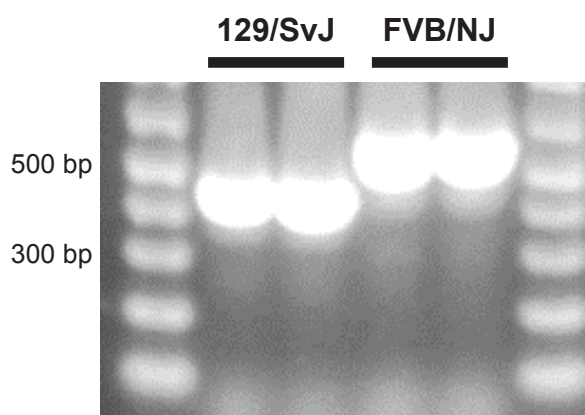
A.



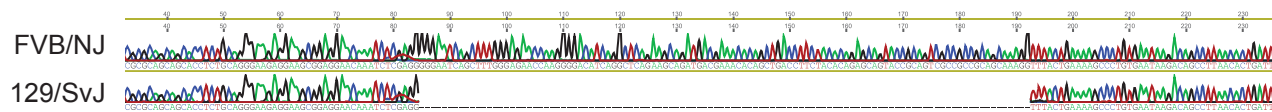
B.



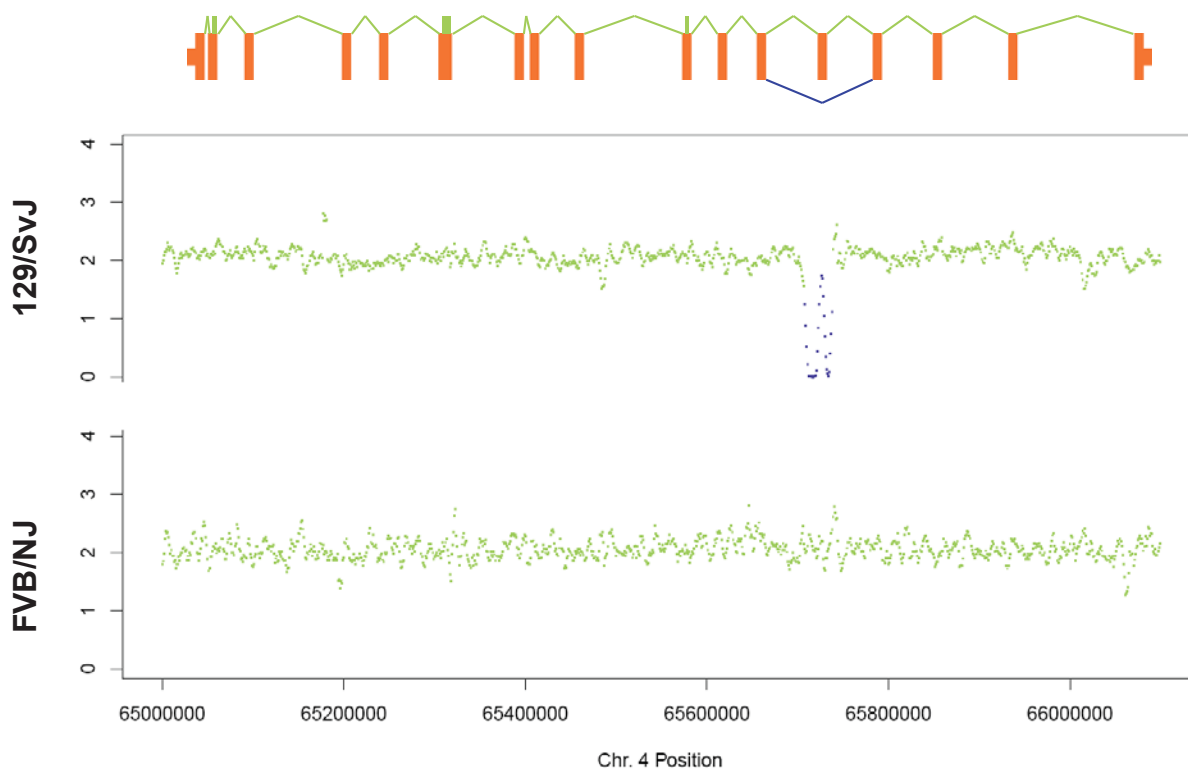
C.



D.

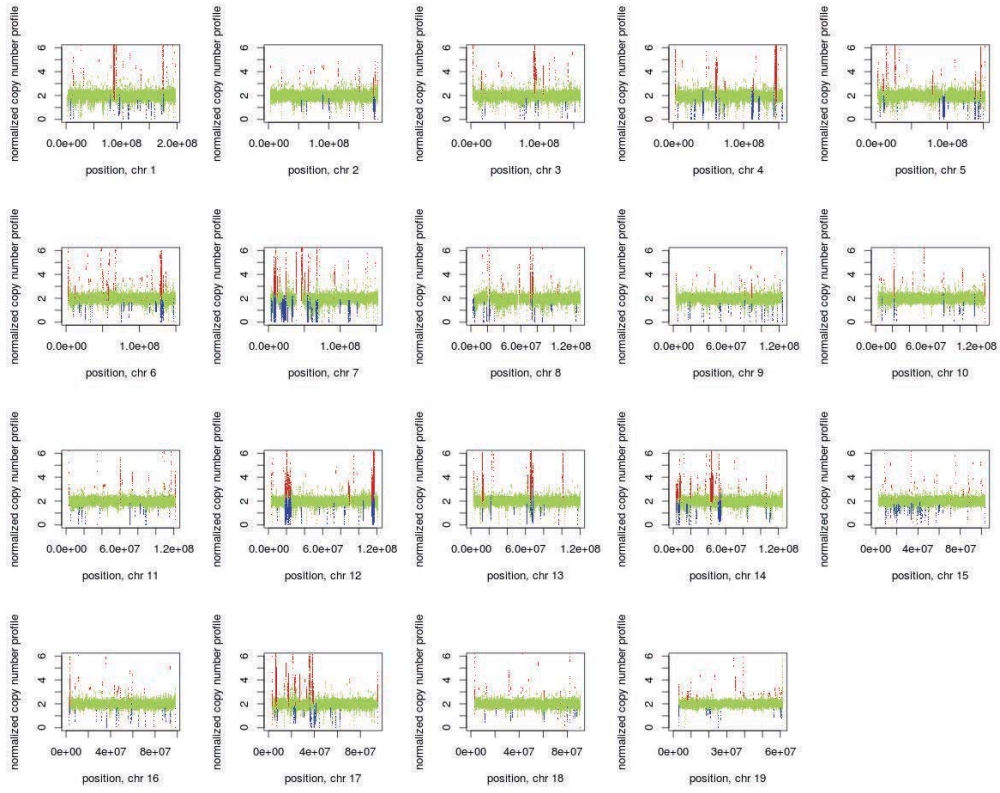


E.

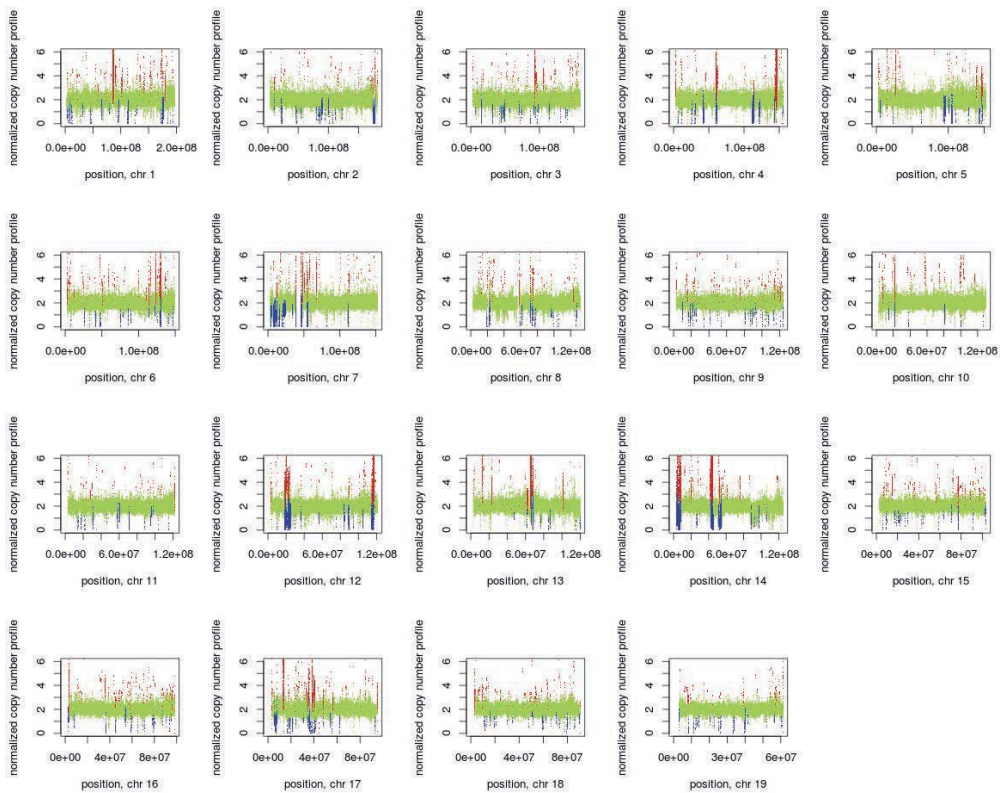


Supplemental Figure S3

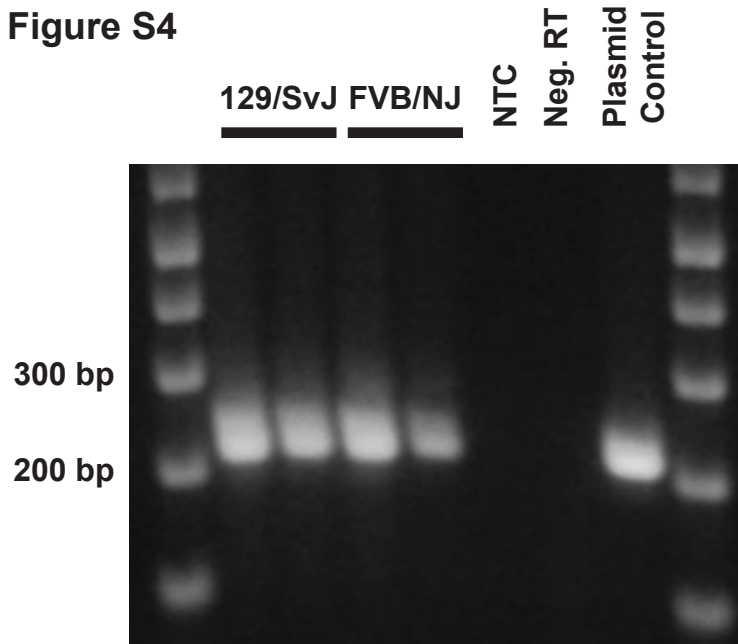
A.



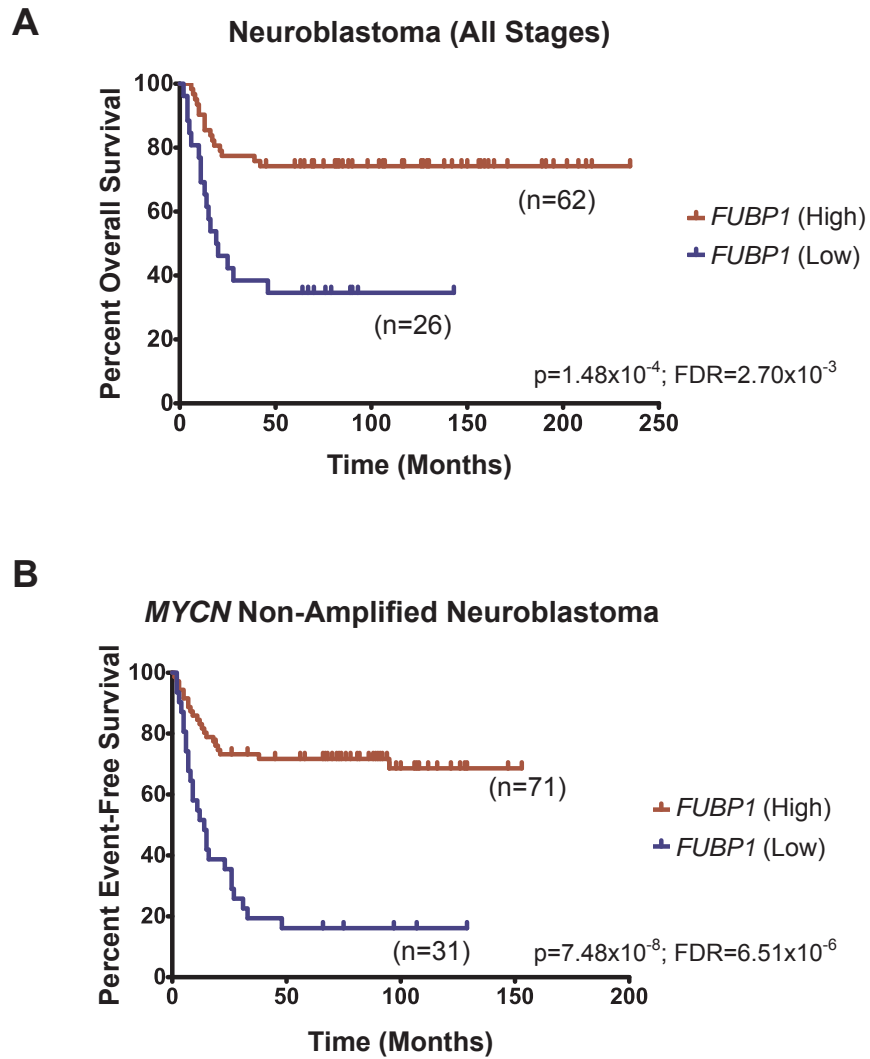
B.



Supplemental Figure S4



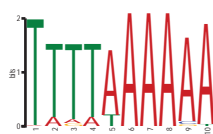
Supplemental Figure S5



Supplemental Figure S6



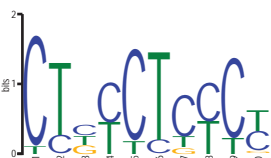
(n=128) E: 4.4×10^{-80}



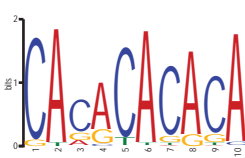
(n=76) E: 5.5×10^{-73}



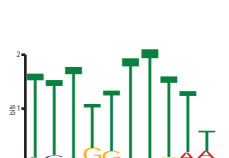
(n=134) E: 1.9×10^{-56}



(n=209) E: 2.6×10^{-56}



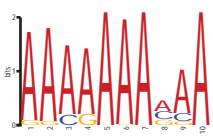
(n=106) E: 3.0×10^{-51}



(n=135) E: 8.4×10^{-28}



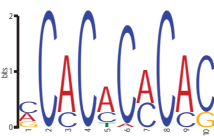
(n=108) E: 8.1×10^{-17}



(n=65) E: 1.7×10^{-16}



(n=92) E: 8.0×10^{-15}



(n=51) E: 1.4×10^{-14}



(n=43) E: 2.4×10^{-13}



(n=53) E: 4.2×10^{-13}



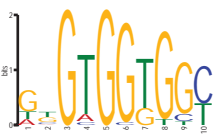
(n=64) E: 1.8×10^{-10}



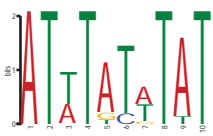
(n=28) E: 1.9×10^{-10}



(n=32) E: 4.7×10^{-10}



(n=57) E: 1.0×10^{-8}



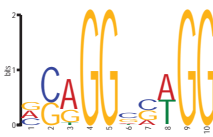
(n=62) E: 7.0×10^{-8}



(n=50) E: 4.5×10^{-6}



(n=66) E: 6.0×10^{-6}



(n=69) E: 3.4×10^{-4}

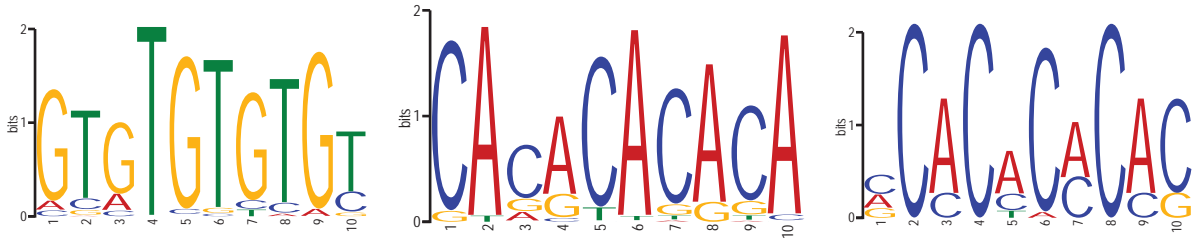


(n=70) E: 4.9×10^{-3}

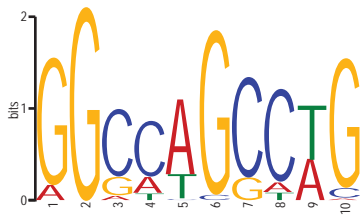


(n=53) E: 3.2×10^{-2}

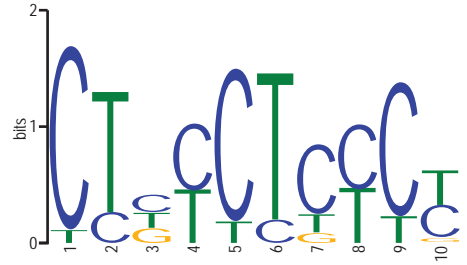
Supplemental Figure S7



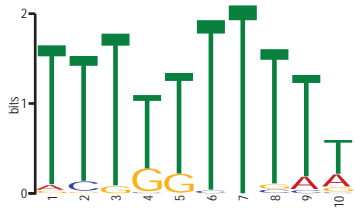
RBM38, ARET, SM, HNRPLL, BRUNOL5, PAPI, HNRNPL



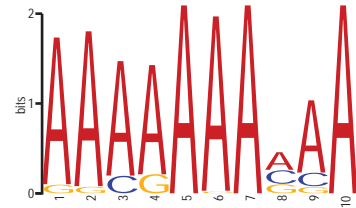
SAMD4A, VTS1P



SRSF10

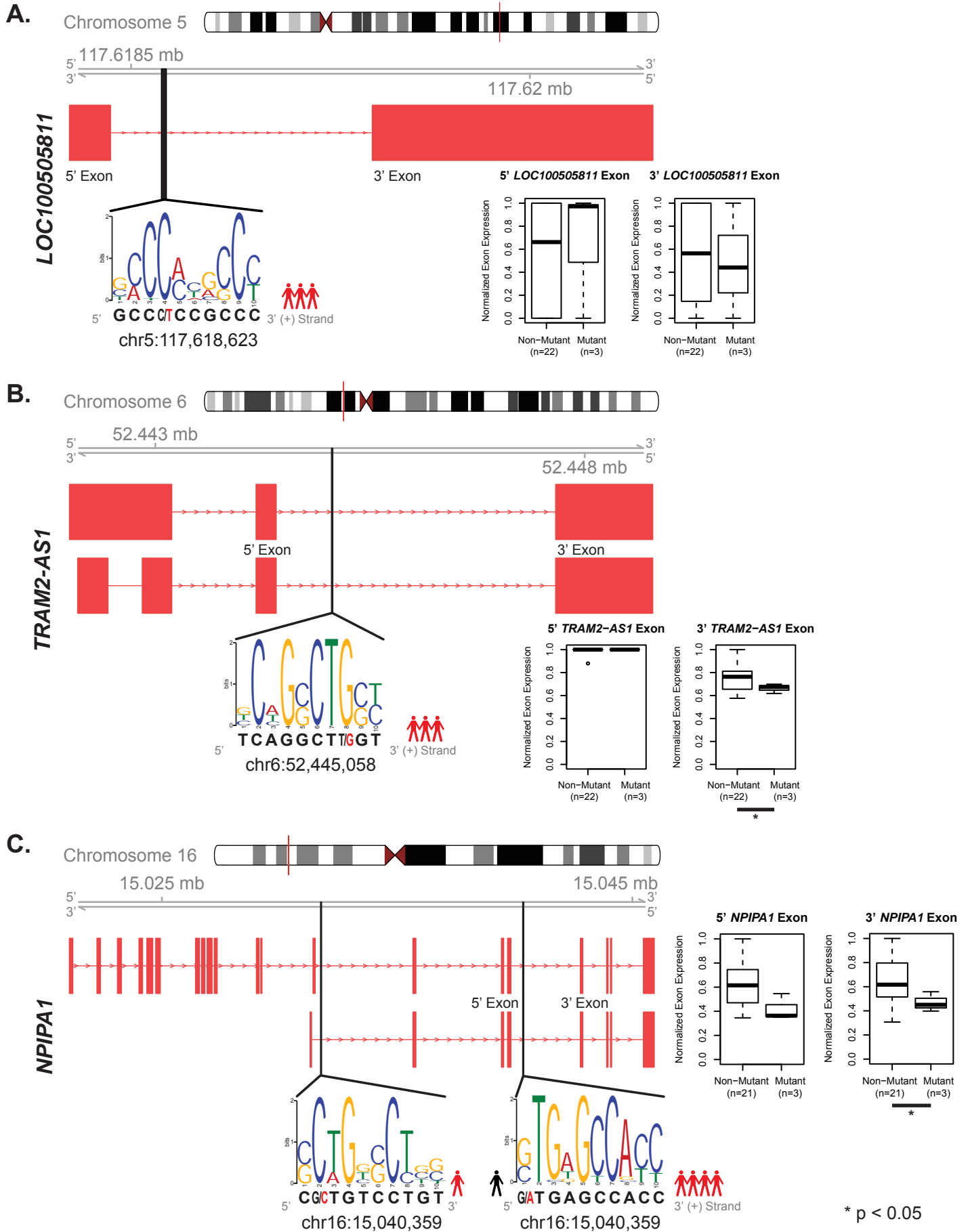


PP_0228, TV_0236, PABPC4, **SXL**,
HUR, OT_0262, LM_0255



SXL, PABPC4, PP_0228, TV_0236, HUR,
OT_0262, LM_0255, TB_0253, SART3, PABPC1

Supplemental Figure S8



* p < 0.05