

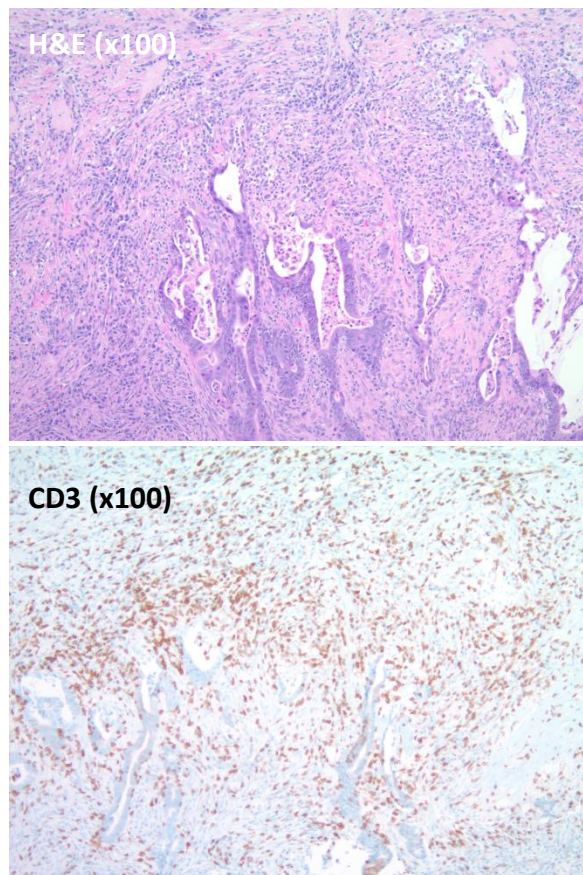
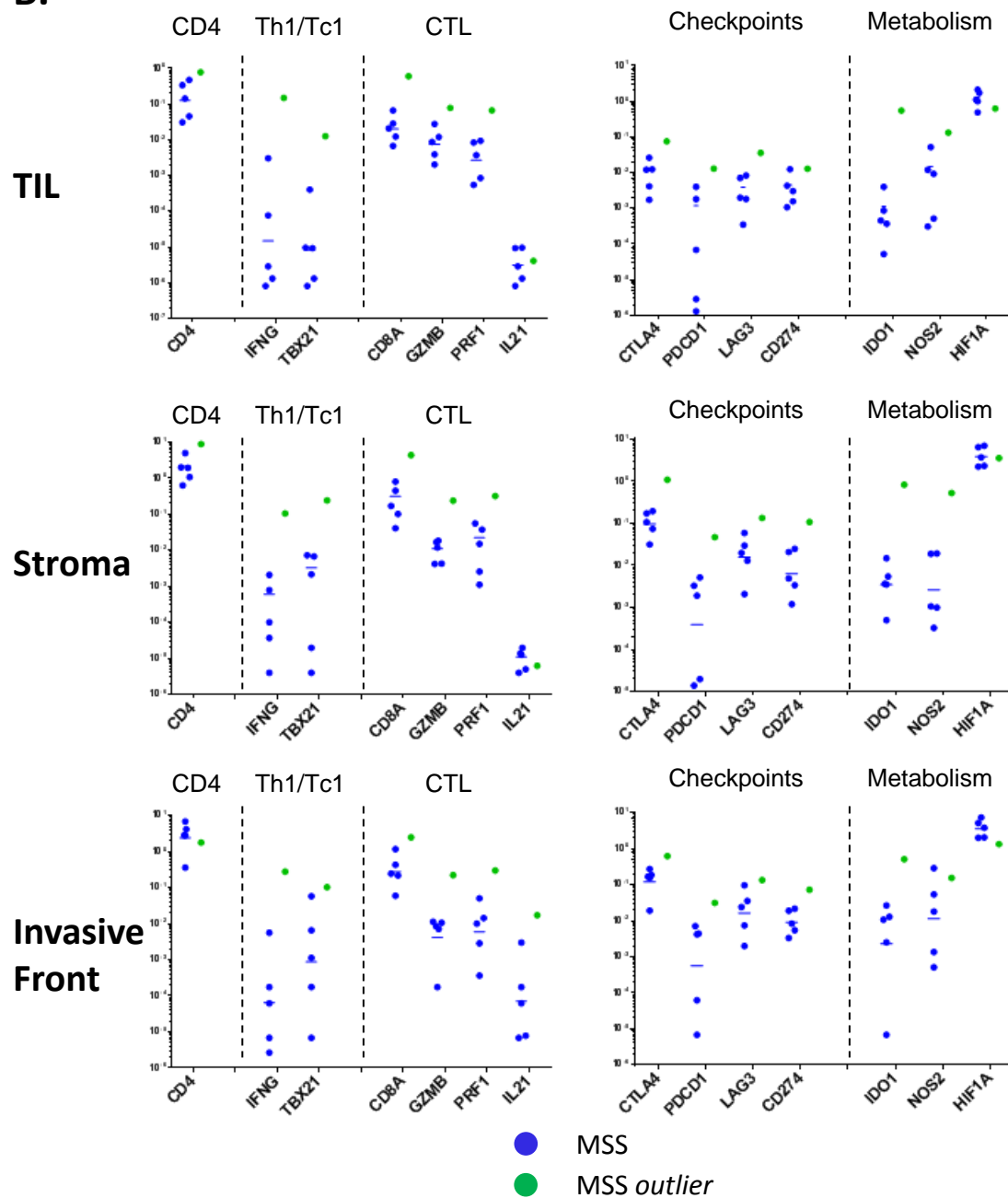
A.**B.****Figure S3**

Fig. S3. Characterization of immune infiltration in MSS CRC outlier. A) H&E and CD3 IHC performed on FFPE tissue sections of MSS CRC outlier which exhibited the typical immune characteristics of MSI CRC. **B)** Molecular analysis of the inflammatory environment in TIL, tumor stroma and invasive front laser microdissected areas from FFPE tissue sections. Immune-related gene expression profiles were assessed using Taqman-based qRT-PCR for selected genes. The graphs represent an arbitrary unit of expression $2^{-\Delta Ct}$, ΔCt representing Ct of the gene of interest normalized by Ct of ubiquitous genes (*GUSB*, *GAPDH*)