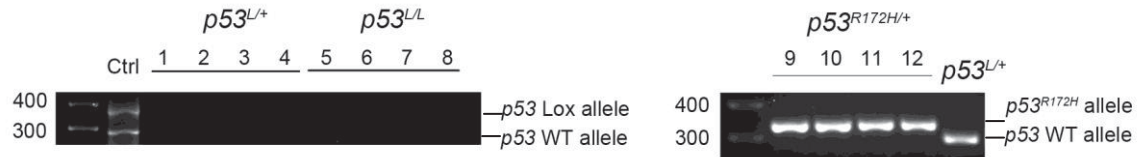
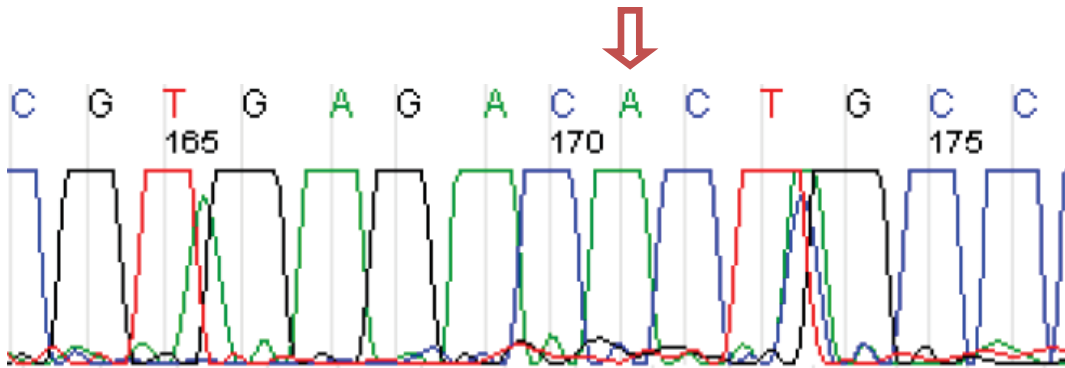


Supplementary Figure S5

(A) *p53* genotyping of tumor cell lines used in figure 2.



(B) All *p53^{R172H/+}* cell lines were sequenced and shown below is the mutation (CAC) encoding histidine (H) in replacement of the *p53* wild type sequence (CGC), encoding arginine (R)



(C) *p53* was not expressed in radiated *p53^{L/+}* and *p53^{L/L}* lines. A *p53* mutant line (*p53^{R172H/+}*) was included as a control.

