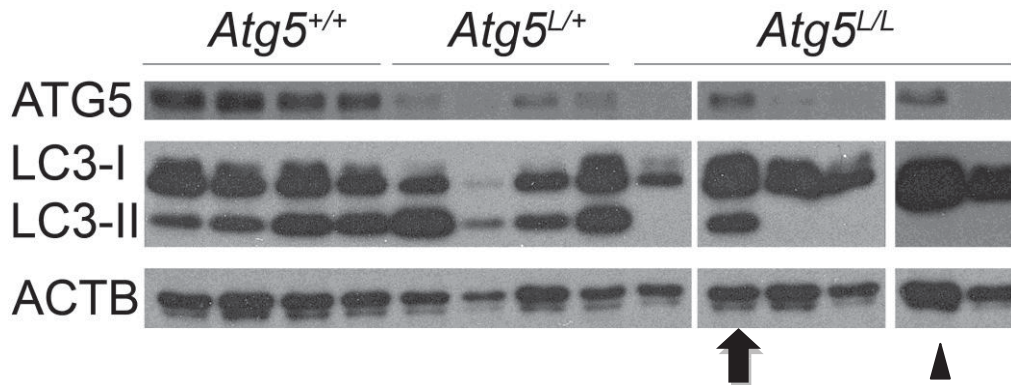


Supplementary Figure S4

(A) Western blot showing loss of Atg5 and LC3-II in tumor cell lines derived from *Atg5^{L/L}* mice. One *Atg5^{L/L}* line restored ATG5 expression and demonstrated LC3-II expression (arrow). A second line restored ATG5 expression but LC3 lipidation was still impaired (arrow head)



(B) Tumors from all three genotypes showed LOH of the remaining *p53* allele (upper panel) and did not express p53 protein even after induction with 8Gy radiation (lower panel). A p53 mutant cell line (*p53^{R172H/+}*) was included as a control for the western blot. For *Atg5^{+/+}* tumors, please see Supplementary Figure S5.

