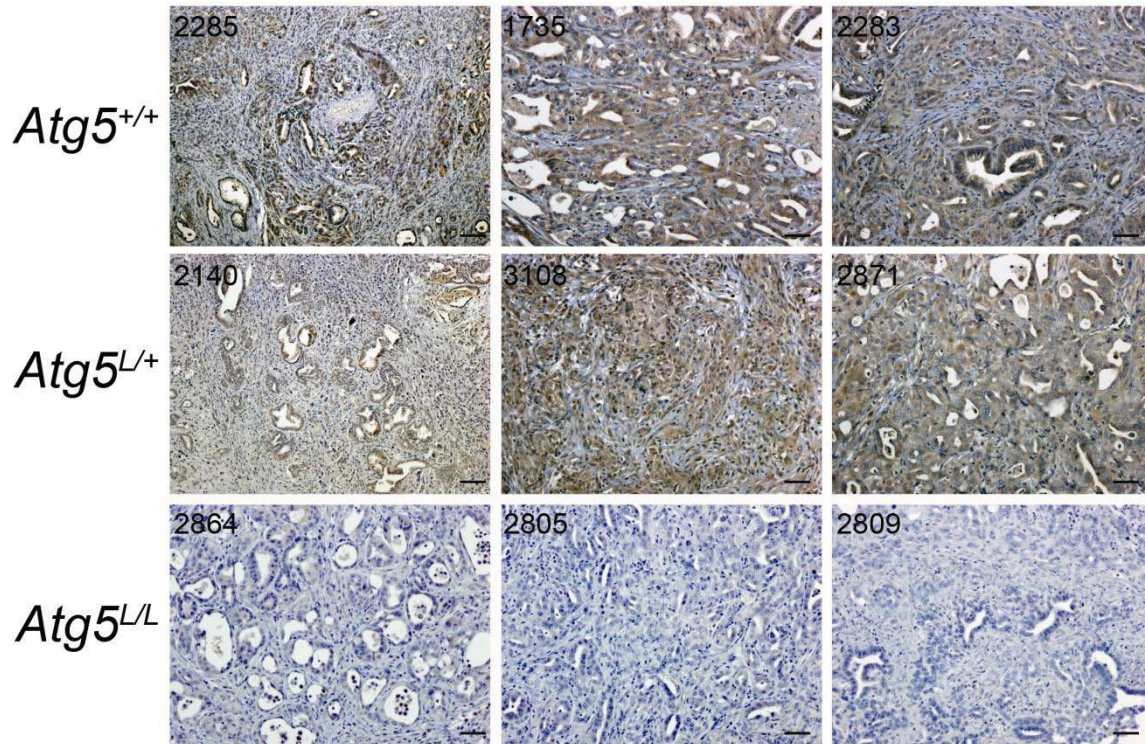


Supplementary Figure S3

(A) ATG5 IHC stain demonstrates loss of Atg5 expression in tumors generated in  $Atg5^{L/L}$ ;  $Pdx1Cre^+$ ;  $IslKras^{G12D/+}$ ;  $p53^{L/+}$  mice. Representative tumors are shown below. Scale bar: 100 $\mu$ m.



(B) LC3 IHC stain demonstrates loss of LC3 puncta in tumors generated in  $Atg5^{L/L}$ ;  $Pdx1Cre^+$ ;  $IslKras^{G12D/+}$ ;  $p53^{L/+}$  mice. Representative tumors are shown below. Scale bar: 20 $\mu$ m.

