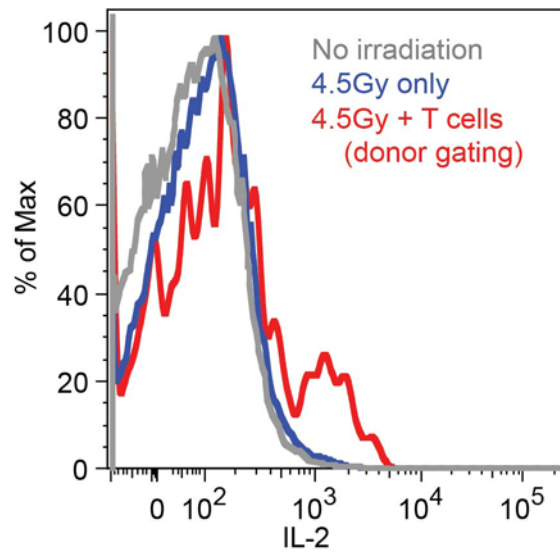


Supplementary Figure 1



Supplementary Figure 1. IL-2 secretion is enhanced in irradiated recipients transplanted with allogeneic T-cells. Sublethally irradiated BALB/c recipients were transplanted with C57BL/6 T-cell depleted (TCD) bone marrow (BM) cells with or without 1×10^6 C57BL/6 WT T-cells. Representative histograms of IL-2 secretion by CD4⁺ T-cells are shown.