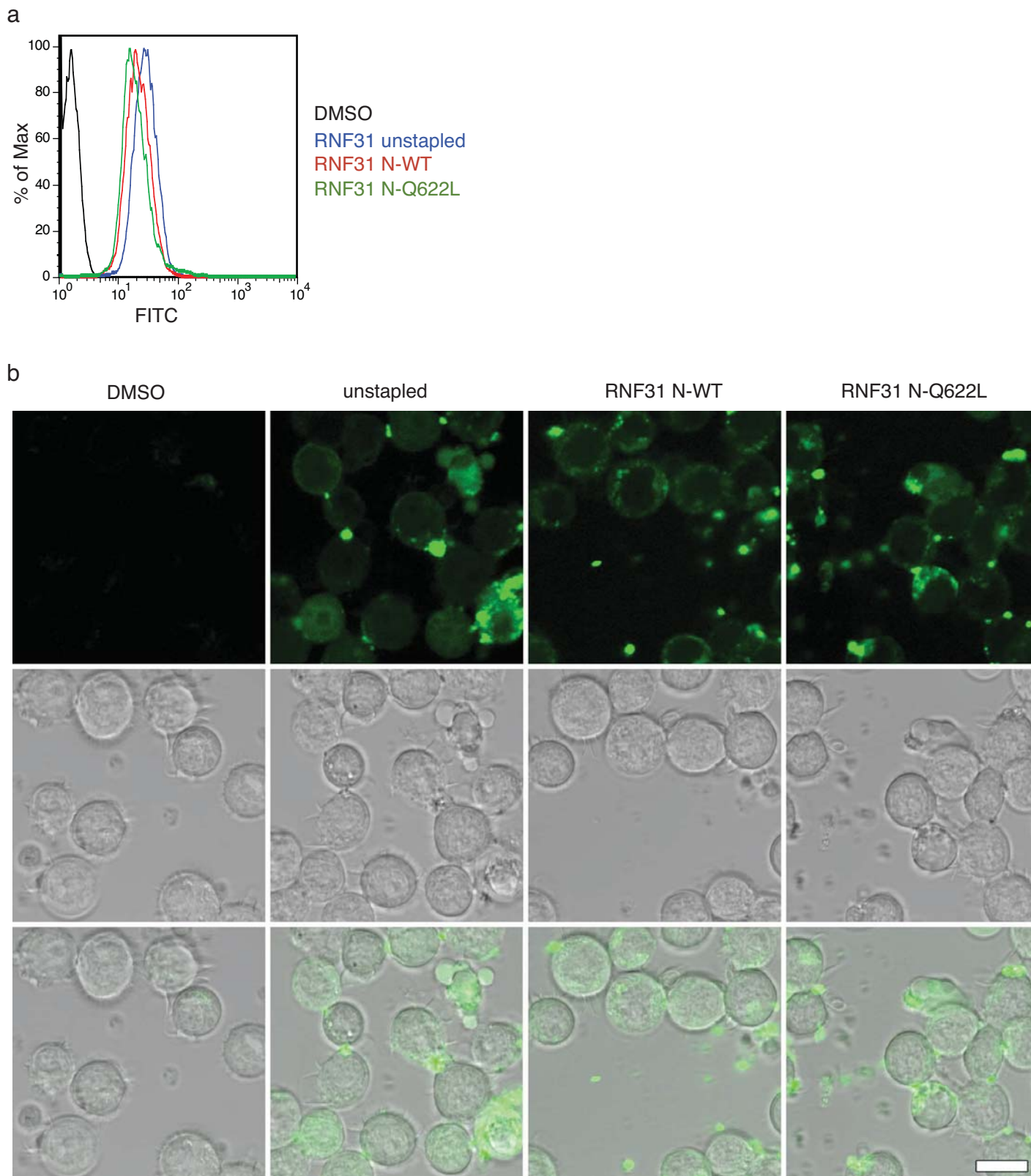


Supplementary Figure 4



Supplementary Fig. 4: RNF31 peptides internalized equivalently in ABC DLBCL cells. **a**, HBL1 cells were incubated with indicated fluorescein isothiocyanate (FITC)-conjugated RNF31 peptides (1 μ M) or DMSO for 6 hours, then pelleted and incubated with 0.25% trypsin solution for 5 min. Washed cells were analyzed by flow cytometry at FITC channel. **b**, HBL1 cells were incubated with indicated fluorescein isothiocyanate (FITC)-conjugated RNF31 peptides (30 μ M) or DMSO for 24 hours, images of treated cells were acquired using confocal microscopy. White bar in lower left panel indicates 10 μ m.