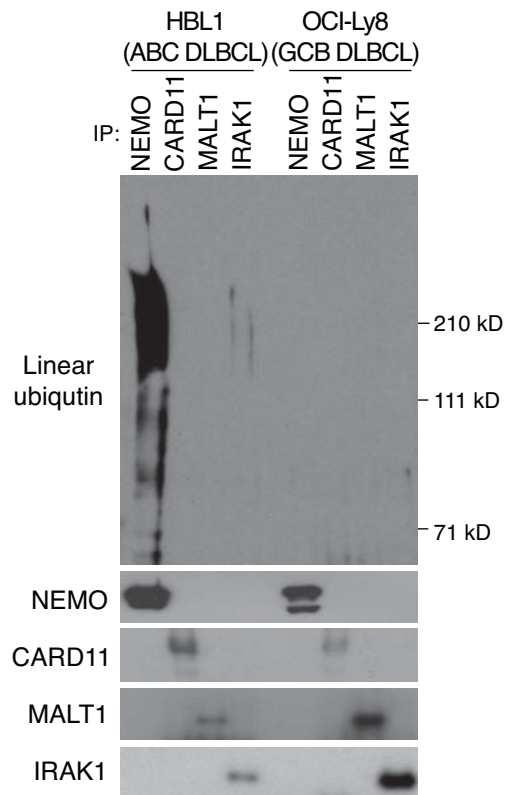


Supplementary Figure 2



Supplementary Fig. 2: Constitutive linear ubiquitination of endogenous proteins in ABC DLBCL cells. ABC DLBCL line HBL1 and GCB DLBCL line OCI-Ly8 were lysed in 1% SDS, diluted and then subjected to immunoprecipitation with the indicated antibodies, followed by immunoblotting for indicated proteins.