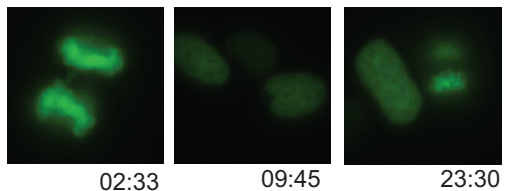
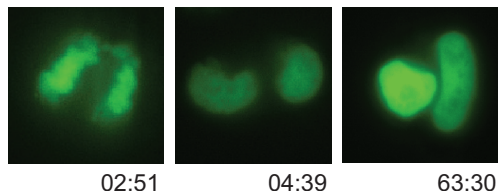


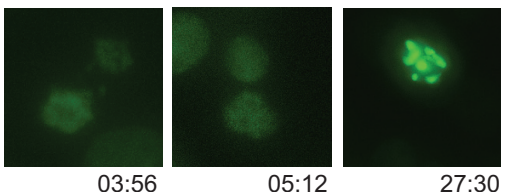
A) Supplementary movie A: Error followed by mitosis



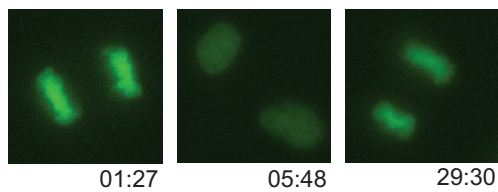
B) Supplementary movie B: Error followed by arrest



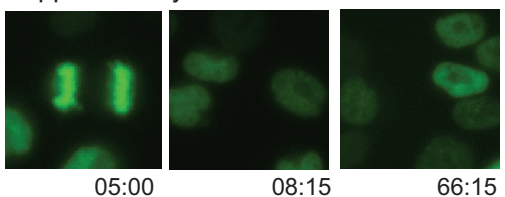
C) Supplementary movie C: Error followed by cell death



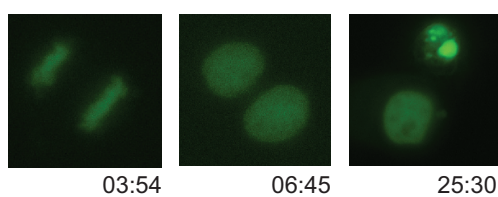
D) Supplementary movie D: No error followed by mitosis



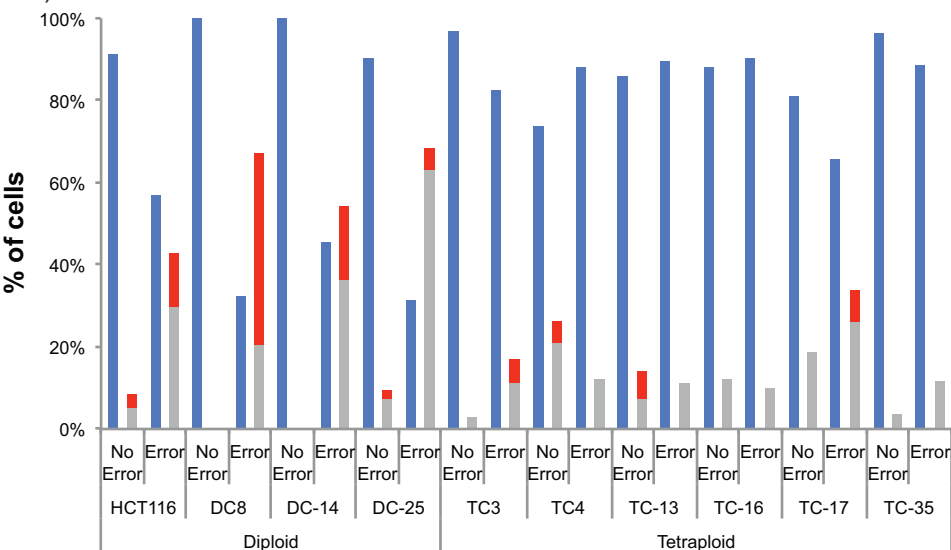
E) Supplementary movie E: No error followed by arrest



F) Supplementary movie F: No error followed by cell death



G)



n numbers

Summary	Error	No error	Total
HCT-116	37	78	115
DC 8	34	29	63
DC-14	11	45	56
DC-25	19	41	60
TC 3	62	33	95
TC 4	25	38	63
TC-13	28	28	56
TC-16	31	25	56
TC-17	38	48	86
TC-35	26	28	54

## Supplementary Figure 4

(A-F) Screen shots captured from Supplementary movies A-C to highlight cell fate either after a segregation error (A-C) or no segregation error (D-F). Time is shown below (hh:mm). **G**) Individual cell fate graph showing different cell fates between diploids and tetraploids after a segregation error. N numbers of daughter cells are shown in the table. Data presented is an amalgamation of different passage numbers: passage 6, 14 and 56 – three experiments for DC 8, TC 3 and TC4, passage 10 and 20 - two experiments for DC-14, DC-25, TC-13, TC-16, and TC-35. TC-17: 3 experiments (p10, p12, p20). HCT-116, three experiments.