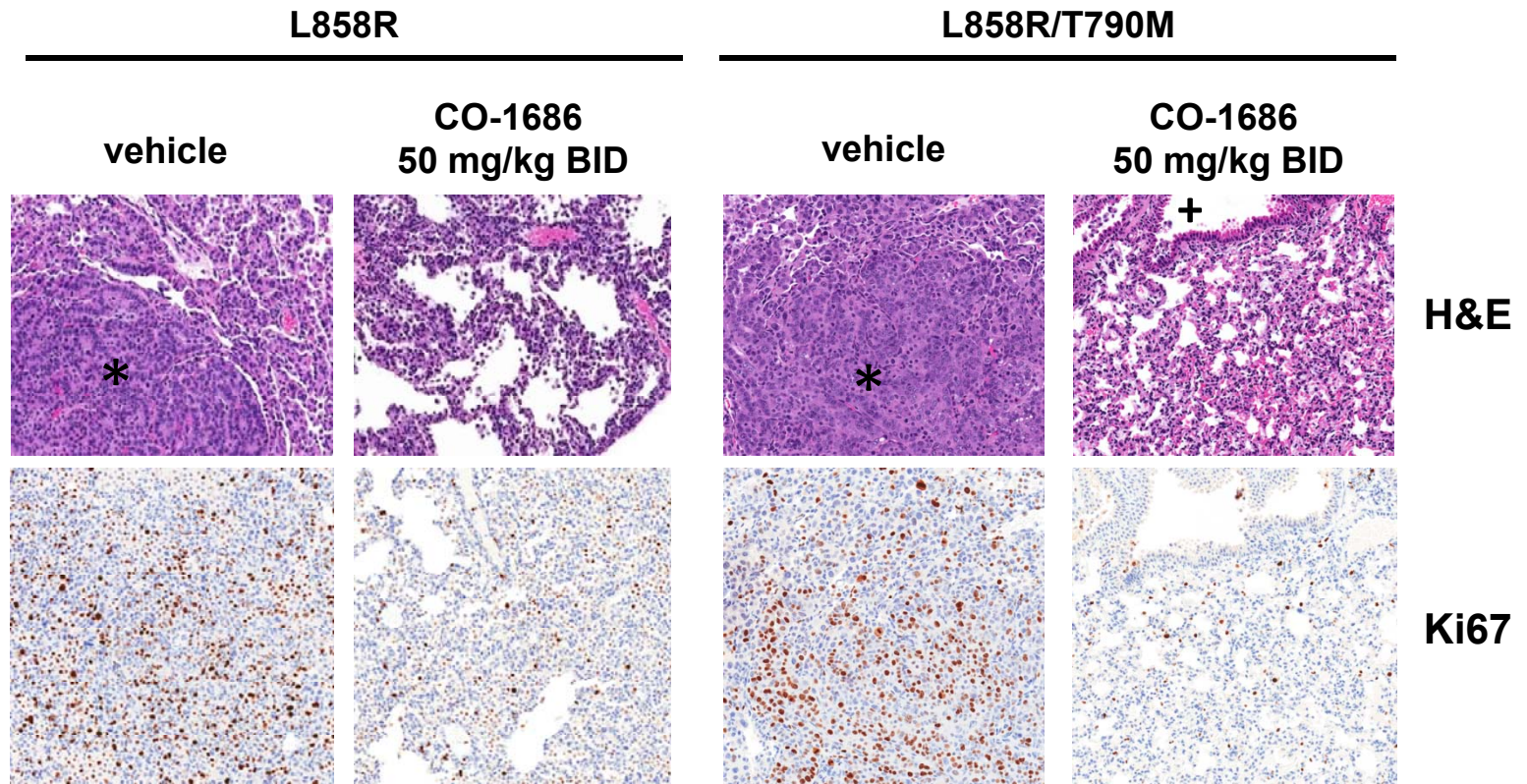


Supplemental Figure 7



**SI figure 7.** H&E and immunohistochemical (Ki67) staining of tumors derived from mouse transgenic EGFR L858R and EGFR L858R-T790M lung cancer models administered CO-1686. Top panel, H&E staining (10x) and bottom panel Ki67 antibody immunohistochemistry staining (10x). \* denotes tumor regions in H&E of vehicle-treated mouse lungs and + indicates a normal bronchiole in treated lungs.