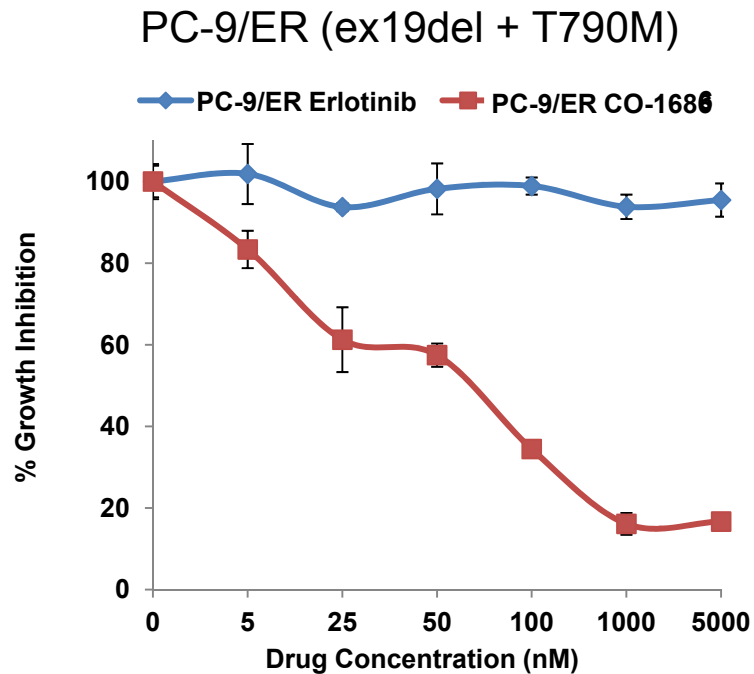
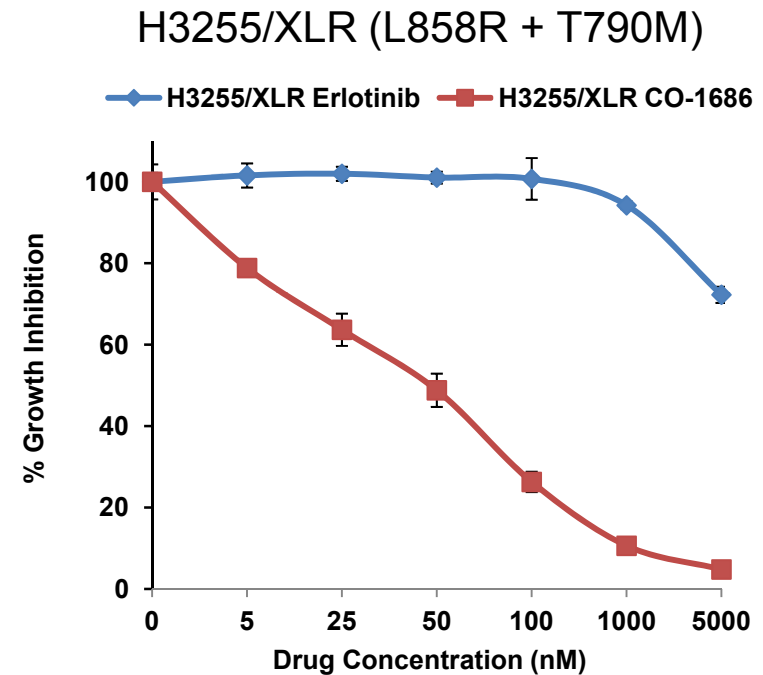


## Supplemental Figure 2

### A



### B



**SI figure 2.** CO-1686 inhibits cell growth in EGFR-mutant erlotinib-resistant cell lines (A) PC-9/ER and (B) H3255/XLR. Cells were treated with increasing concentrations of erlotinib or CO-1686 for 96 hours. N=3 trials/cell line. Data are plotted as percentage growth relative to untreated control. Error bars represent standard deviation.