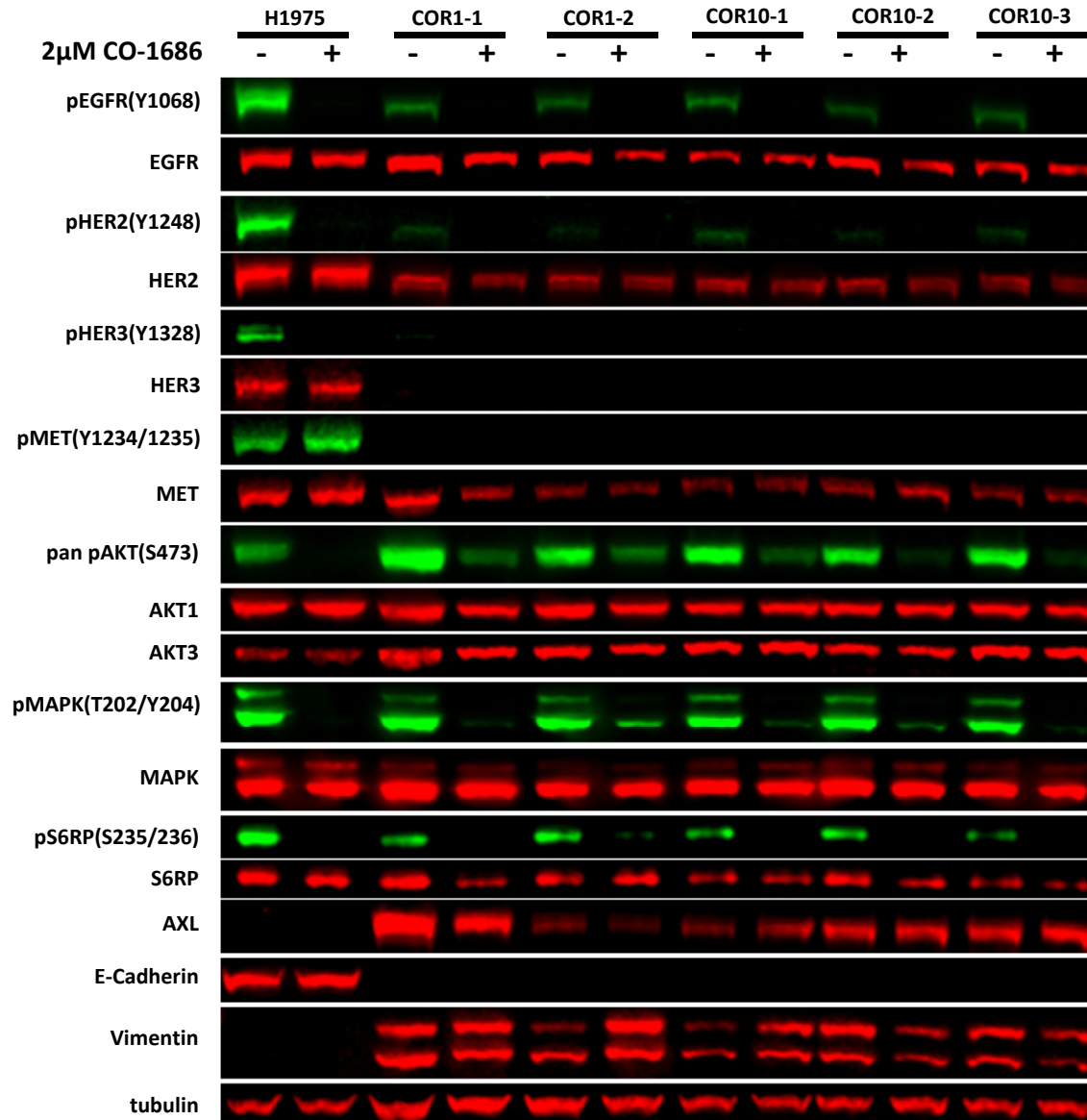


## Supplemental Figure 10



**SI figure 10:** Analysis of multiple EGFR-related signaling pathways in parental NCI-H1975 and COR resistant clones by Western blotting. Exponentially-growing cells were starved overnight and treated with 2 $\mu$ M CO-1686 for 60 minutes. Samples containing 30 $\mu$ g total protein were analyzed via Western blot and detected using an Odyssey Fc Imaging System.