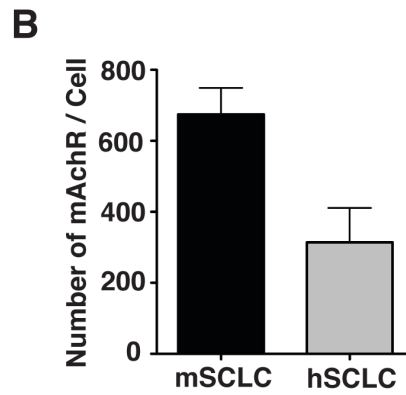
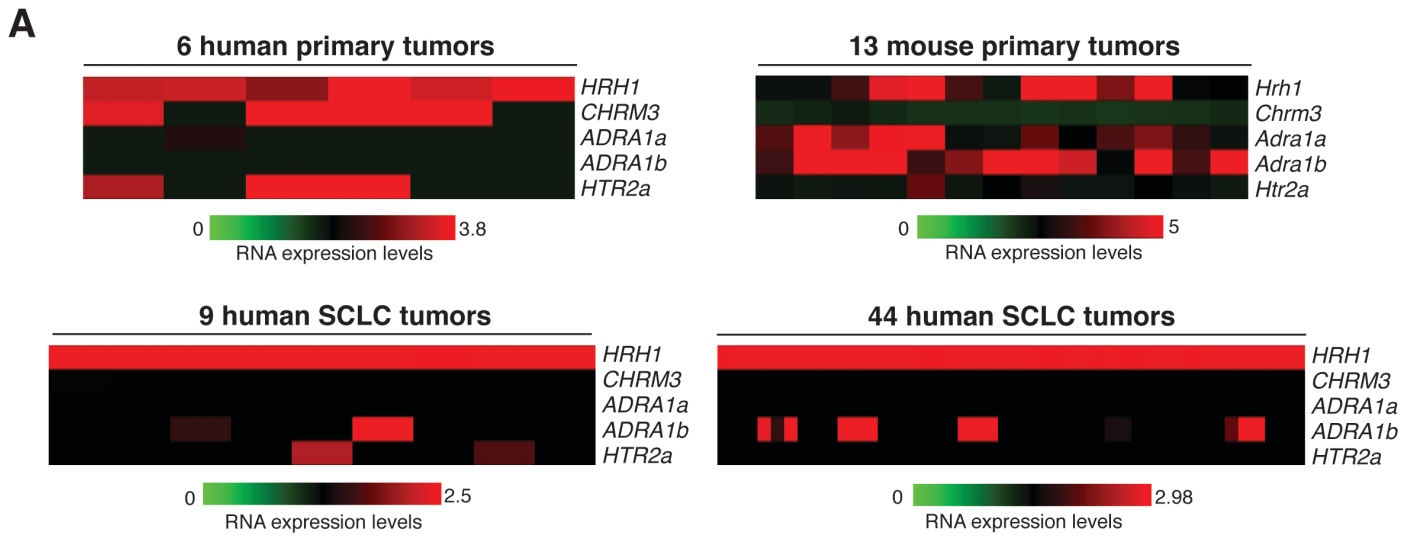


Supplementary Figure S4



Supplementary Figure 4: Expression levels of the GPCRs that are the targets of tricyclic antidepressants,

A, Heat maps showing normalized RNA expression levels for the Histamine 1 Receptor (H1R), the Muscarinic acetylcholine receptor isoform 3 (CHRM3), the Alpha1A and Alpha1B Adrenergic Receptors (ADRA1a and ADRA1b), and the Serotonin Receptor 2A (HTR2a) in human and mouse SCLC tumors from four independent studies. **B,** Quantification of the number of muscarinic receptors (mAChR) per mSCLC (Kp3) and hSCLC (H69) cell using an *in vitro* binding assay.