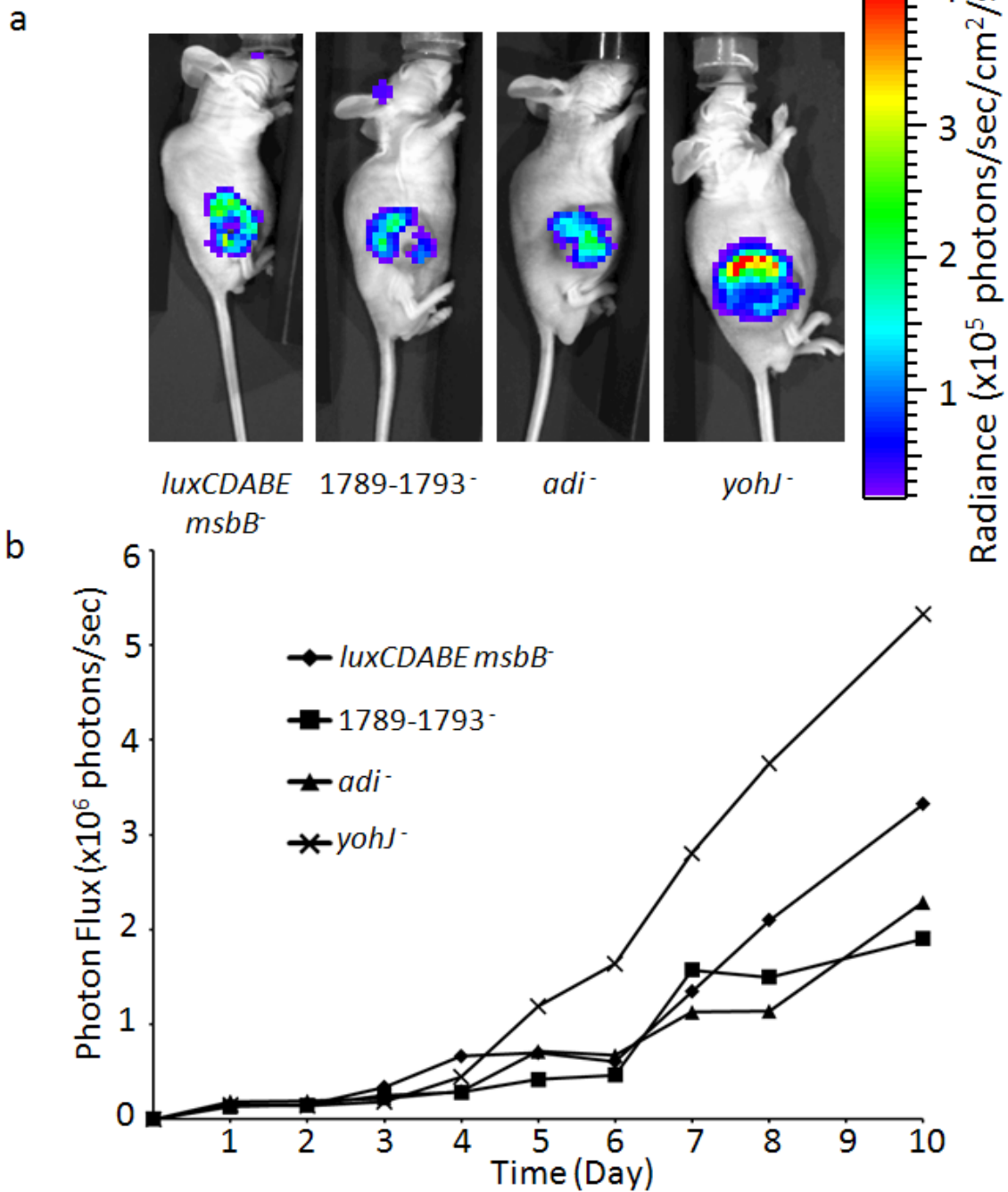


Supplemental Figure 1



Supplemental Figure 1. Activated genes are not essential for *Salmonella* tumor localization. Mice bearing B16F10 flank tumor xenografts were injected intravenously with constitutively bioluminescent gene-deleted *Salmonella*. (a) Representative mice on day 10 post *Salmonella* injection. (b) Bioluminescent photon flux of the four mice depicted in (a) as a function of time following intravenous injection of bacteria.