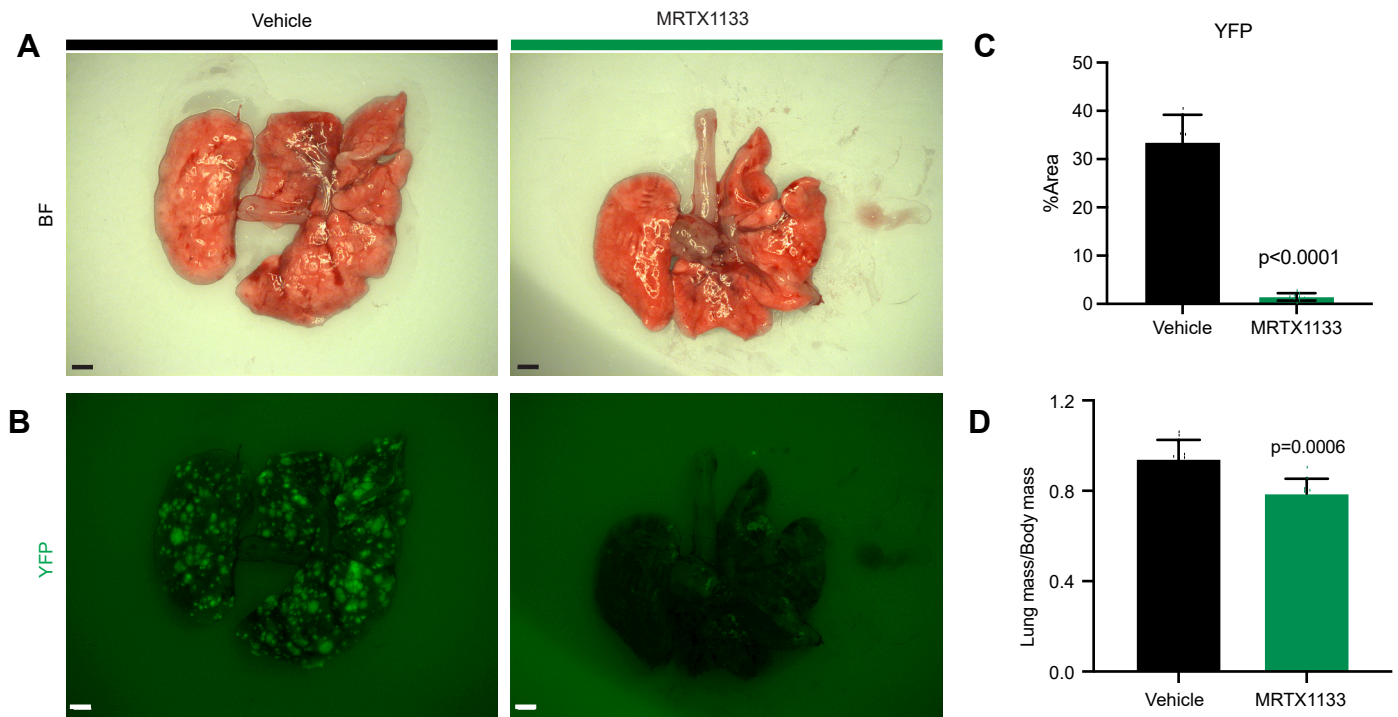


Figure S3

6419c5 - tail vein, 7d



Supplementary Figure 3. MRTX1133 reduces metastatic burden in a tail vein model.

(A) Representative brightfield images of lungs from vehicle and MRTX1133 (6419c5, tail vein, 7d) treated mice. Scale bars, 1 mm.

(B) Representative fluorescent images of YFP signal in lungs from vehicle and MRTX1133 (6419c5, tail vein, 7d) treated mice. Scale bars, 1 mm.

(C) Quantitation of YFP expression as percent area in vehicle (n= 7) and MRTX1133 treated (n=9) mice. p-value was determined by Student's unpaired t-test. Error bars indicate SD.

(D) Ratio of lung mass to body mass in vehicle (n=9) and MRTX1133 treated (n=9) mice. p-value was determined by Student's unpaired t-test. Error bars indicate SD.