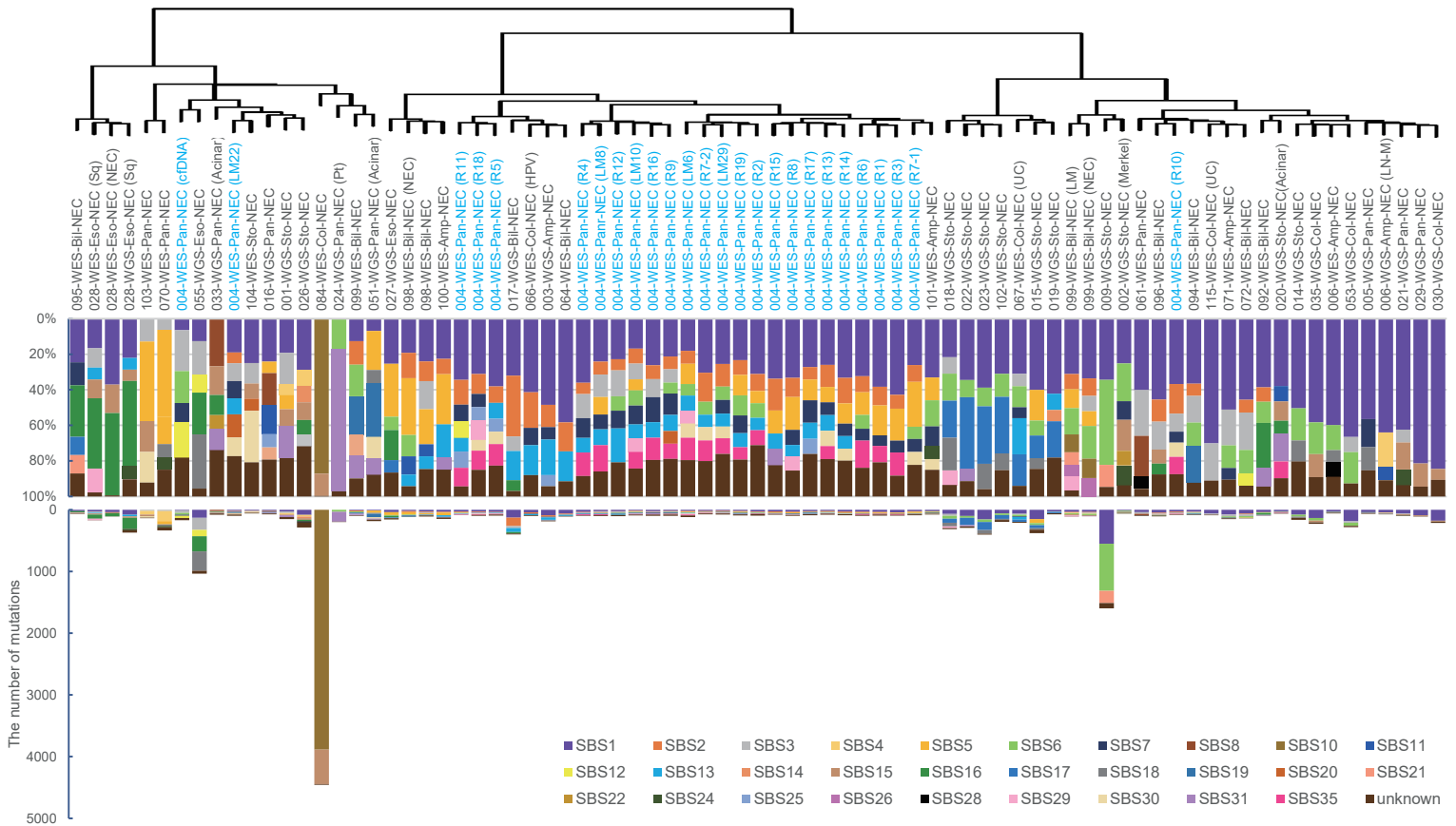


# Supplementary Figure S19. Contributions of COSMIC-mutational signatures calculated using deconstructSigs for GIS-NECs.



Contributions of COSMIC-mutational signatures in WGS and WES data, including multi-region sequencing in the autopsied patient (Case NE004, samples written in blue letters), calculated using the deconstructSigs (18). Clustering by contribution of mutational signatures was performed using unsupervised hierarchical clustering with cosine distance and Ward linkage. Bil, Bile duct; Eso, Esophagus; NEC (Sq), Squamous cell carcinoma component; NEC (NEC), NEC component; Pan, Pancreas; LM, Liver metastasis; Sto, Stomach; Col, Colorectum; Pt, Platinum chemotherapy treatment; R, Region No. in the primary Panc-NEC (NE004); Amp, Ampullary; HPV, human papillomavirus; Merkel, gastric NEC with the Merkel cell polyomavirus (MCPyV); UC, ulcerative colitis; LN-M, lymph node metastasis.