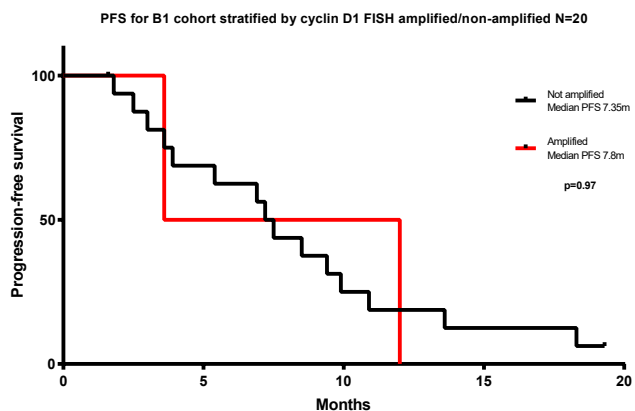


Supplementary Fig. S4

A

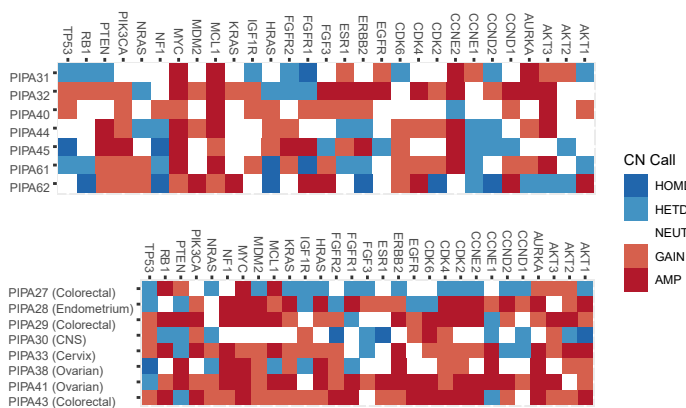


B

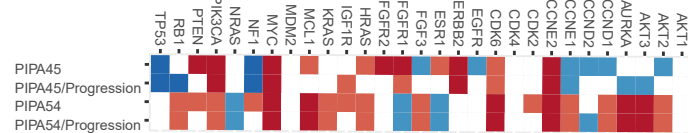
FISH amplification	Copy number amplification		Total	PPV = 1 NPV = 0.75
	Yes	No		
Yes	2	0	2	
No	4	12	16	
Total	6	12	18	

Sensitivity = 33% Specificity = 100%

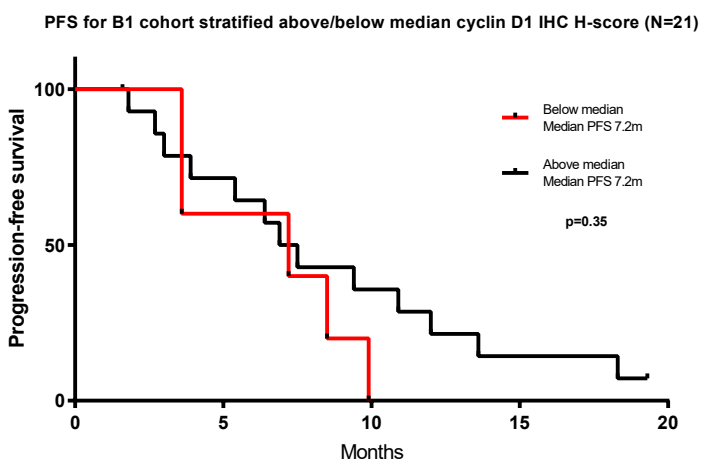
C



D



E



F

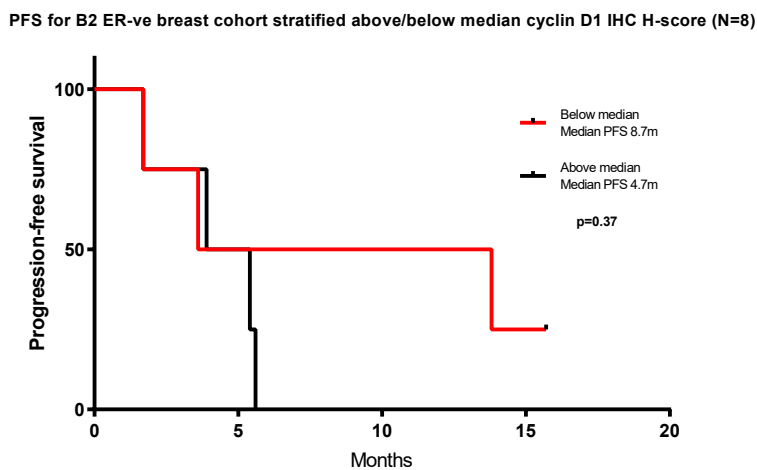


Figure 4. Baseline tissue biomarker analysis.

- A) PFS for part B1 stratified by cyclin D1 FISH amplified/non-amplified (N=20). Median PFS 7.8m vs 7.35m, respectively. $p=0.97$, Log-rank test.
- B) Contingency table representing predictive positive and negative values for copy number gain vs FISH amplification for *CCND1*.
- C) ulWGS for baseline CNV of *PIK3CA*-mt ER-ve breast patients (5 TNBC, 2 ER-ve/HER2+) (top) and other solid tumors (bottom).
- D) ulWGS for paired baseline/progression CNV analysis (N=2).
- E) PFS for B1 cohort stratified above/below median cyclin D1 H-score (N=21). Median PFS 7.2m vs 7.2m, respectively. $p=0.35$, Log-rank test.
- F) PFS for B2 ER-ve breast patients stratified above/below median cyclin D1 H-score (N=8). Median PFS 4.7m vs 8.7m, respectively. $p=0.37$, Log-rank test.