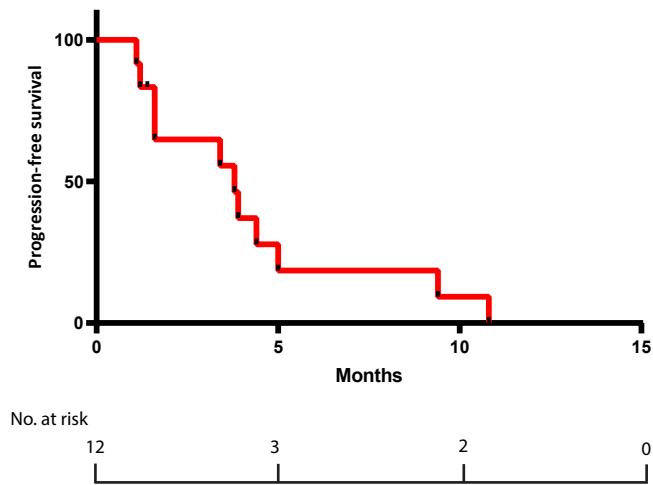
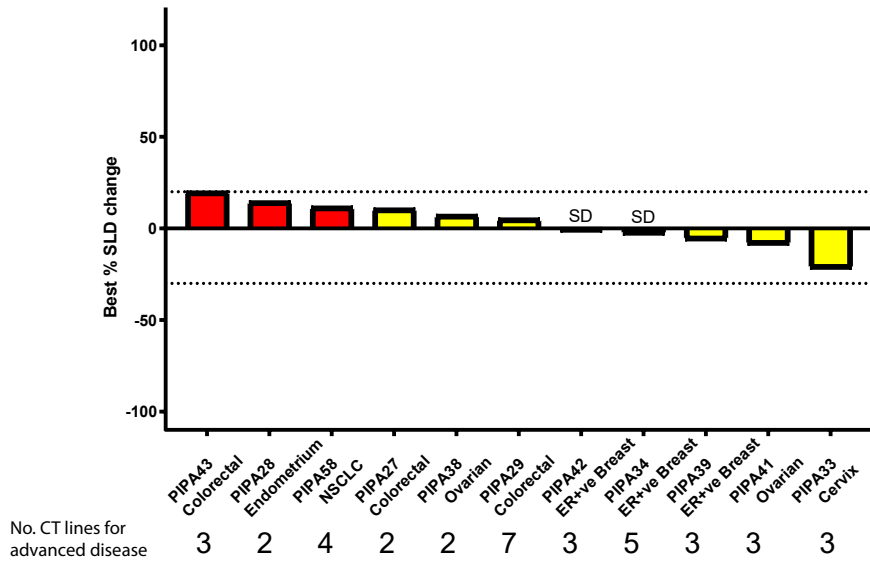


A



**Figure 3. Efficacy of doublet palbociclib plus taselesib in advanced solid tumors.**

- A) Top: Waterfall plot with percentage of tumor change and best overall response for evaluable solid tumors patients in part B2 with RECIST follow-up to assess confirmed response (N=11). One patient (anaplastic oligodendroglioma) not represented as disease measured using response assessment in neuro-oncology (RANO) criteria. Below a schematic view of tumor type classification. Best overall response colour code: yellow= stable disease (SD), red= progressive disease (PD). Bottom: Kaplan-Meier curve representing progression-free survival (PFS) for evaluable for solid tumor patients in part B2 (N=12). Median PFS 3.8 months (95% CI 1.2-5.0).