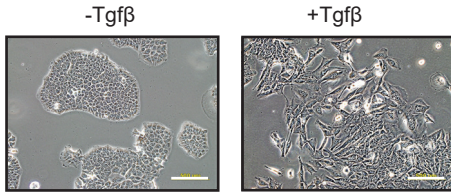
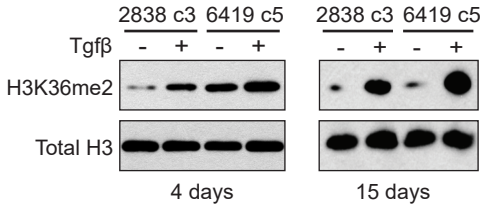


# Supplementary Figure S9

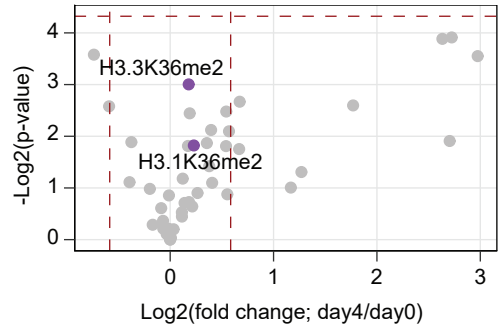
**A**



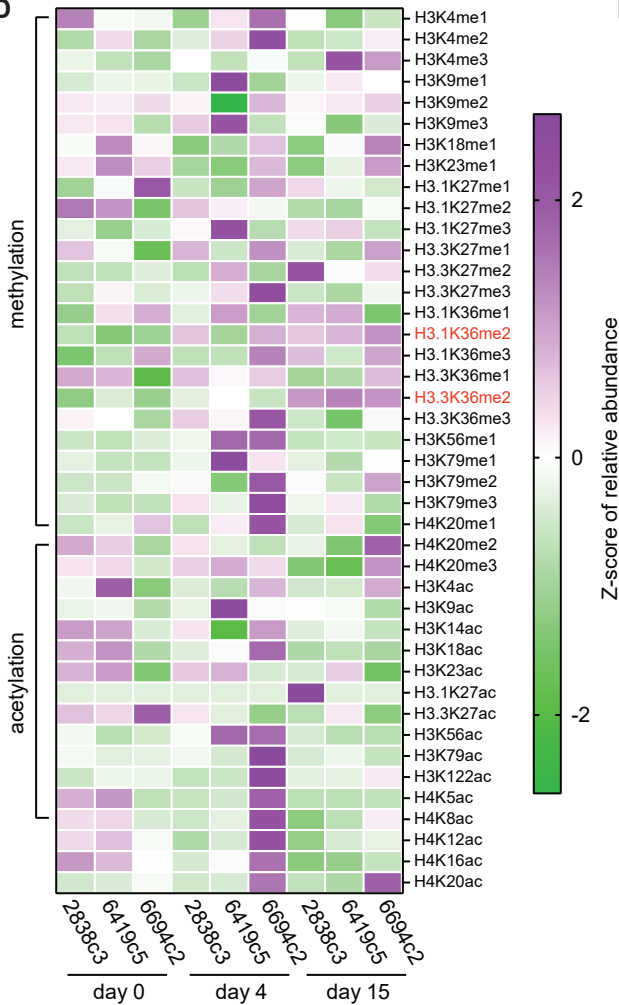
**B**



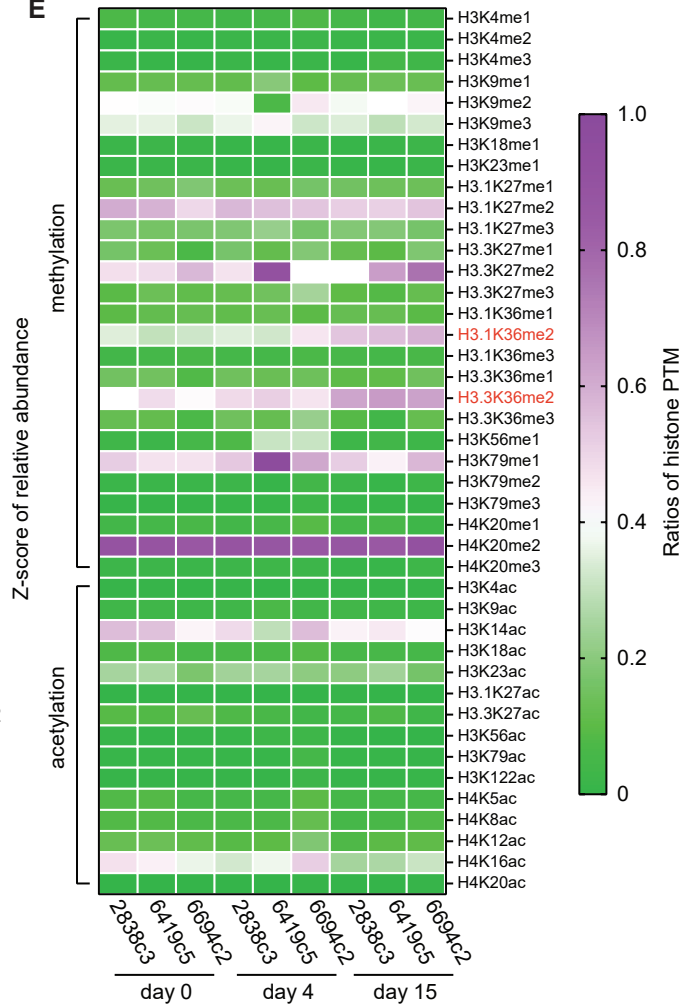
**C**



**D**



**E**



**Supplementary Figure S9. Long-term Tgf- $\beta$  treatment is associated with more global H3K36me2.**

**(A)** Representative BF images of cultured cells treated with citric acid control or Tgf- $\beta$  for 4 days (scale bars = 100 $\mu$ m).

**(B)** Western blot of acid-extracted histones from 2 cell lines treated with citric acid or Tgf- $\beta$  for either 4 or 15 days.

**(C)** Volcano plots presenting log<sub>2</sub>-transformed p-value and fold change of histone H3 and H4 single PTM relative abundance for 4 days of Tgf- $\beta$  treatment/citric acid control. Horizontal dotted line demarcates student's unpaired t-test p-value < 0.05, while vertical dotted lines demarcate  $\pm$  1.5 fold change (n=3 cell lines). H3K36me2 marks are labeled and represented in purple.

**(D-E)** Heatmaps of z-scores **(D)** or ratios **(E)** of mass spectrometry-derived histone H3 and H4 single PTM relative abundances of indicated cell lines treated with Tgf- $\beta$  for 0, 4, and 15 days. Results of triplicates are shown.