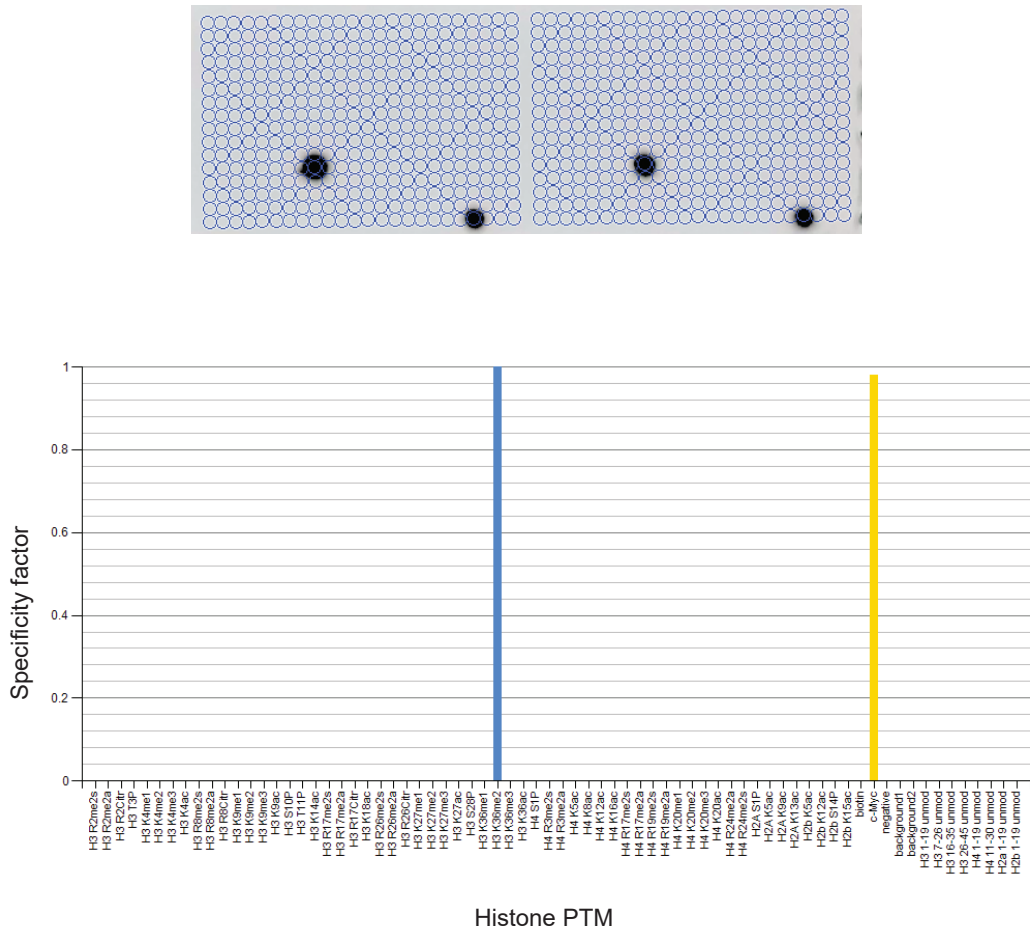


Supplementary Figure S4



Supplementary Figure S4. The anti-H3K36me2 antibody is specific for its target.

The Modified™ Histone Peptide Array (Active Motif, Cat.#13005) was probed with the anti-H3K36me2 antibody (Cell Signaling Technology, Cat.# 2901, lot #5) and the c-myc positive control antibody provided by the manufacturer. The array was visualized by a chemiluminescent detection system and scanned with Active Motif's Array Analysis Software 7 to analyze spot intensity (top). The Array Analysis Software generates a specificity factor, which is the ratio of the average intensity of all spots containing the mark divided by the average intensity of all spots not containing the mark (bottom).