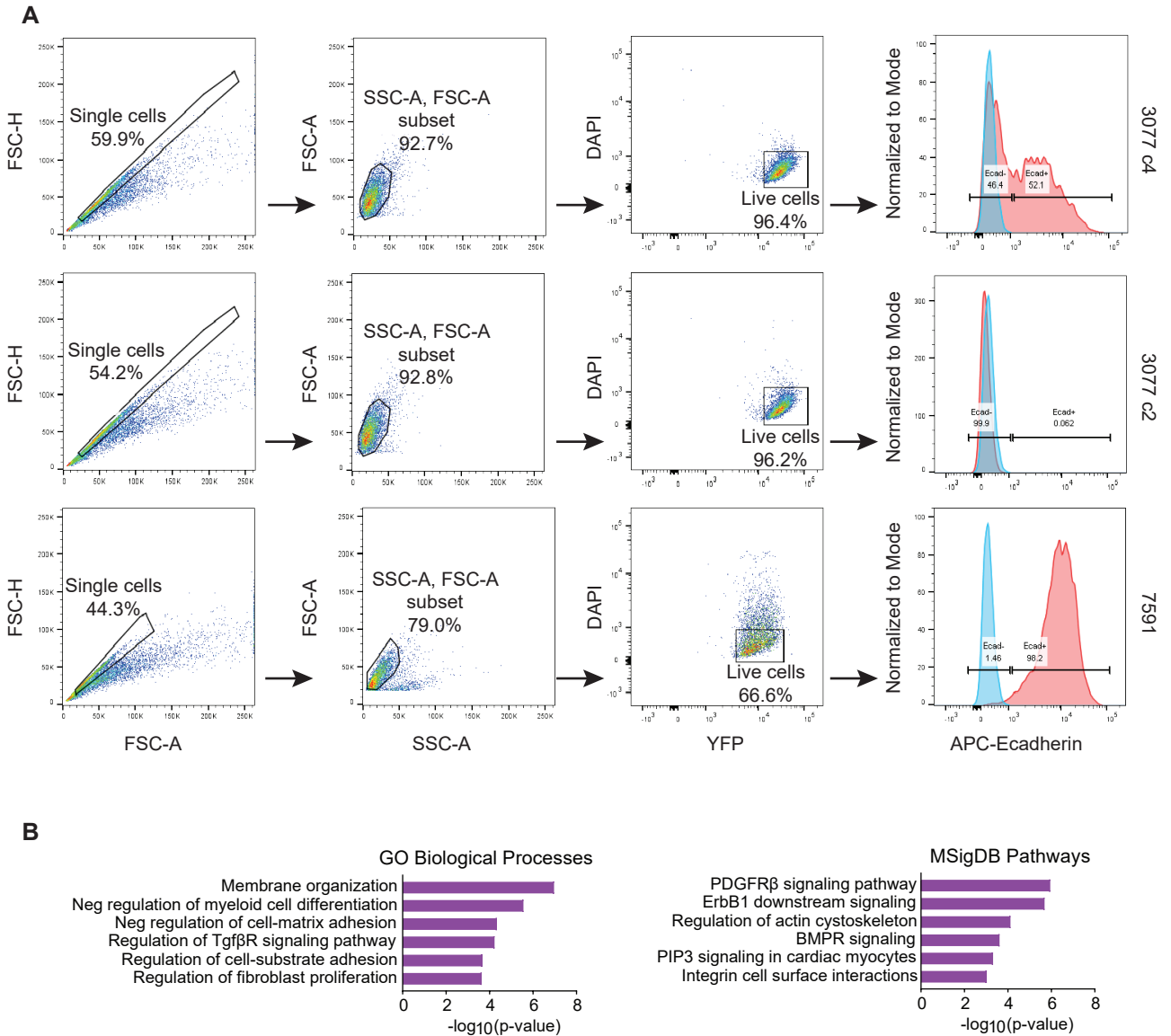


## Supplementary Figure S1



### Supplementary Figure S1. Establishing cell lines as tools to study epithelial plasticity.

**(A)** Gating strategy and representative flow plots for 3 clonal KPCY cell lines: 3077 c4, 3077 c2, and 7591. First, single cells were gated using FSC-A and FSC-H. Then, cellular debris was excluded by FSC-A and SSC-A. Live cells were selected as DAPI-negative and YFP-positive events, and subsequently analyzed for E-cadherin positivity by APC-staining. IgG was used as a control to determine Ecad<sup>-</sup> and Ecad<sup>+</sup> gates.

**(B)** GO Biological Process and MSigDB Pathway analyses performed on ATAC-seq peaks differentially open in Ecad<sup>-</sup> samples using GREAT. In total, 60000 ATAC-seq peaks were identified, of which 1049 are differentially open in the Ecad<sup>-</sup> subpopulation and 324 are differentially open in the Ecad<sup>+</sup> subpopulation (padj<0.1).