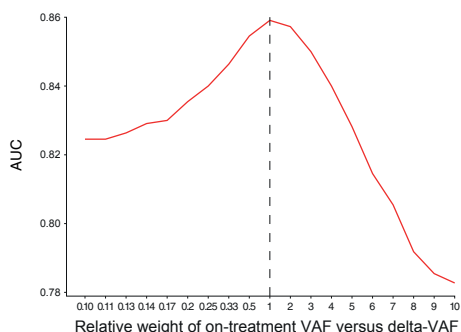
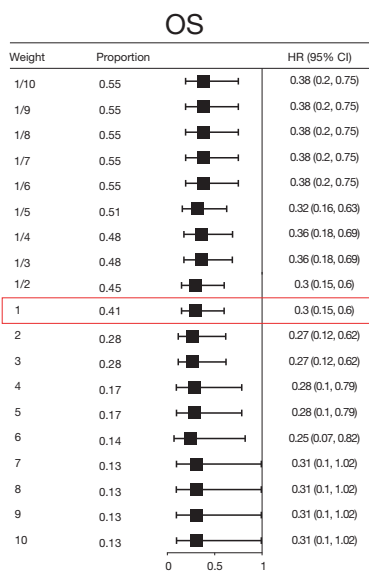
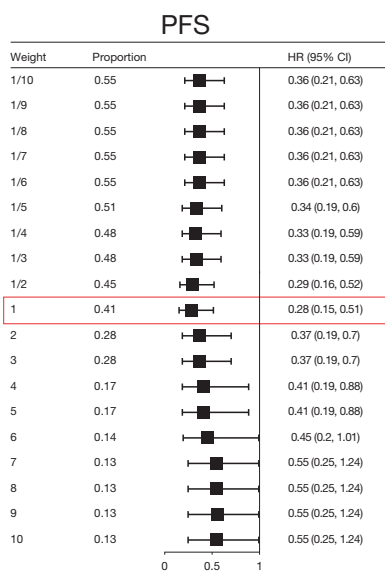


Supplementary Figure 7

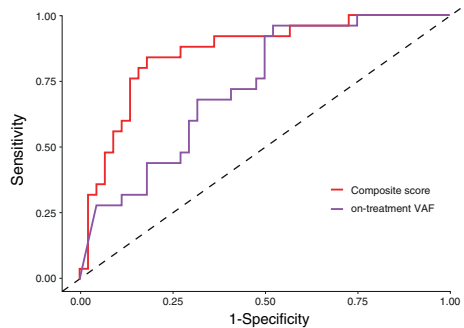
A



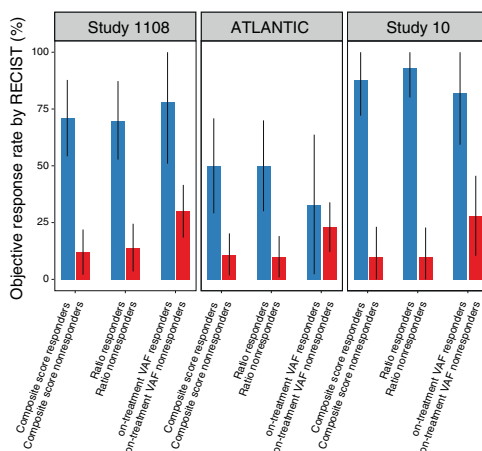
B



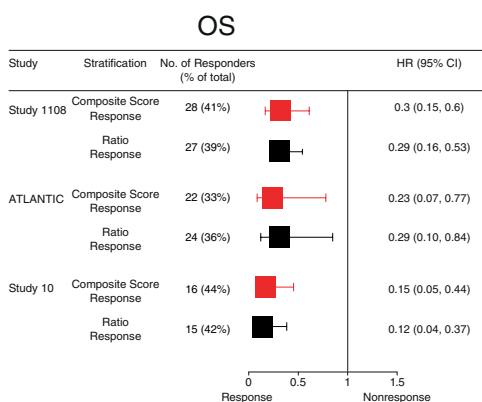
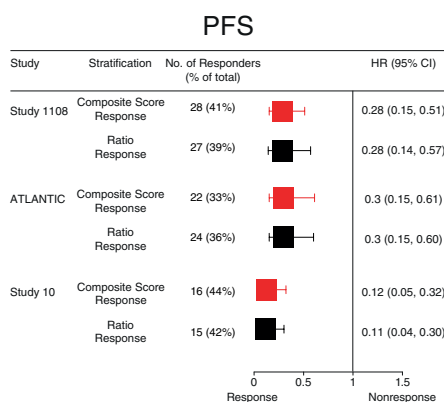
C



D



E



Supplementary Figure 7. Development of a composite score metric with contributions from delta-VAF and on-treatment VAF, and comparison with the ratio-based molecular response metric (incorporating pretreatment VAF and on-treatment VAF). (A) The relative weight of delta-VAF and on-treatment VAF in the composite score was determined by optimizing prediction of ORR in Study 1108, as quantified by area under the curve (AUC). (B) Forest plot of logrank HRs to identify weights to maximize predictability of response in the discovery cohort. A weight of 1.0 optimizes the combination of the OS and PFS HRs. (C) ROC curves of the composite score and on-treatment VAF to predict the best response. (D) ORR among patients with and without composite score response, ratio response, and on-treatment VAF response. (E) Forest plot for PFS and OS based on the composite score response and ratio response.