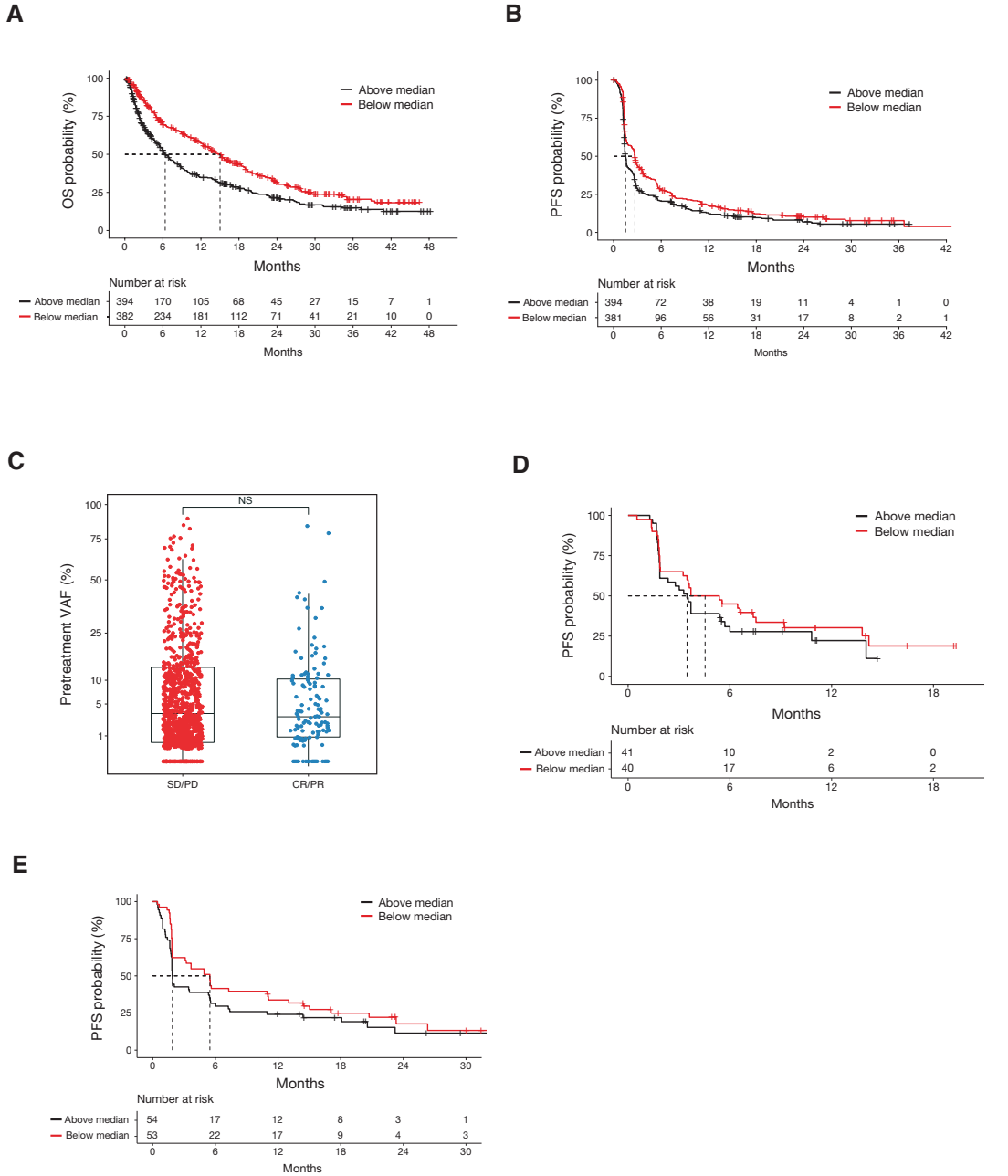


Supplementary Figure 3



Supplementary Figure 3. Relationship between maximum pretreatment VAF and OS, PFS and response in the discovery cohort (Study 1108). Kaplan-Meier analysis of (A) OS and (B) PFS of patients in the discovery cohort stratified by median maximum pretreatment VAF. This cutpoint showed significant differences in OS (HR=0.64, 95% CI 0.54, 0.76; $p < 0.0001$) and PFS (HR=0.75, 95% CI 0.64, 0.87; $p = 0.0002$). (C) Pretreatment maximum VAF was not significantly associated with ORR ($p = 0.68$). The horizontal bar represents the mean, the box represents the 25th and 75th percentiles, and whiskers $\pm 1.5 \times$ IQR.

Kaplan-Meier analysis of PFS in the validation cohorts (D) ATLANTIC and (E) Study 10 by pretreatment VAF: HR=0.77, 95% CI 0.46, 1.29; $p = 0.32$ and HR=0.73, 95% CI 0.48, 1.11, $p = 0.14$, respectively.